



# MAJOR ONLINE AUCTION



**INJECTION MOLDERS • THERMOFORMERS • EXTRUSION LINES**

**FEATURING: 2004 BROWN CS-4500 THERMOFORMER,  
(5) HUSKY 300 to 500 TON INJECTION MOLDERS,  
(2) WELEX 4.5" EXTRUSION LINES & MUCH MORE!!**



**New  
2004**

**BROWN CS-4500  
THERMOFORMER**

BY ORDER OF

# RAPID MOLDED PRODUCTS

14325 MONTE VISTA AVE,  
CHINO, CALIFORNIA 91710



**1 of 2**

**HUSKY G500-RS100/85  
INJECTION MOLDER  
(1999/2000)**

**ONLINE BIDDING ONLY  
FIRST LOT CLOSES:  
JUNE 30, 11:00 AM (PDT)**



**New  
1999**

**HUSKY G400-RS 85/70 INJECTION MOLDER**

Sale under Management of:

**Thomas Industries, Inc.**

2414 Boston Post Road, Guilford, CT 06437-2310

Phone (203) 458-0709 • Fax (203) 458-0727

email: [gavel@thomasauction.com](mailto:gavel@thomasauction.com) • [www.thomasauction.com](http://www.thomasauction.com)



# LATE MODEL THERMOFORMERS • HUSKY IN



BROWN CS-4500 THERMOFORMER



BROWN C-4200 THERMOFORMER



BROWN T350L TRIM PRESS



HUSKY  
G300-RS60160  
INJECTION  
MOLDER  
(1998)

1 of 2



HUSKY  
G500-RS100/85  
INJECTION  
MOLDER  
(1999/2000)

1 of 2

## THERMOFORMING MACHINE

**BROWN** THERMOFORMING MACHINE MODEL CS-4500 (NEW 2004), 40" X 42" MAX. MOLD SIZE, 7" MAX. DEPTH DRAW, 48" X 14" OVEN, MOTORIZED ROLL FEED, XYCOM AUTOMATION CONTROL, W/ 2004 BROWN MACHINE LLC INLINE 35 TON TRIM PRESS, MODEL T-350L S/N 14715, BROWN CUTTING PRESS MODEL T72SR, S/N 8907, 25" W X 16" L BED, 10 HP MOTOR

**BROWN** THERMOFORMING MACHINE MODEL C-4200, S/N 8309 (1980'S VINTAGE), 40" X 36" MAX. MOLD SIZE, 48" X 10' OVEN, MOTORIZED ROLL FEED, CONTROL CONSOLE, W/ 1986 MODERN MACHINERY CUTTING & BURNING PRESS MODEL M S/N M101, 75 HP, BROWN 30 TON TRIM PRESS, MODEL TP30, S/N 00017627, 2002 BROWN MACHINE LLC PLC INLINE 35 TON TRIM PRESS MODEL T-350L, S/N 14451, AC MODEL 1050 PROGRAMMABLE LIMIT SWITCH, (2) UNIOP PLC'S  
(5) **ARMAC** THERMAL FORMING LINES MODELS: 2224, 3030, 3036

## INJECTION MOLDING MACHINE

(2) **HUSKY** 550 TON INJECTION MOLDING MACHINE MODEL G500-RS100/85 (NEW 1999 & 2000), 145.4 CU IN SHOT SIZE, 34.6" CLAMP STROKE, HYDRAULIC CLAMPING, CNC CONTROLS, COLOR FEEDER, HOPPER, VACUUM LOADER

**HUSKY** 440 TON INJECTION MOLDING MACHINE MODEL G400-RS 85/70 (NEW 1999), 79.8 CU IN SHOT SIZE, 26.6" CLAMP STROKE, HYDRAULIC CLAMPING, CNC CONTROL, COLOR FEEDER, HOPPER, VACUUM LOADER

(2) **HUSKY** 330 TON INJECTION MOLDING MACHINE MODEL G300-RS60160 (NEW 1998), 70.5 CU IN SHOT SIZE, 38.8 oz, 22.6" CLAMP STROKE, HYDRAULIC DAMPENING, CNC CONTROL, COLOR FEEDER, HOPPER, VACUUM LOADER

## EXTRUDER

**WELEX** 4.5" EXTRUDER MODEL 450 S/N 358, 250 HP, 30:1 L/D, WATER COOLED; 4-1/2" CONTINUOUS SCREEN CHANGER; 53" SHEET DIE CENTER BACK ENTRY FLEXLIP; WELEX 18 X 53 3-ROLL ROLLER #SL-1853 W/ 2-CHROME 1-MATTE ROLLS & 15' RUN-OFF TABLE; 1-HP RUBBER NIP ROLLS; GEC MODEL EFT WINDER; CONAIR HUSH-GUARD 412-201-01 20 HP REGRINDER.; NEW DYNISCO SCREEN CHANGER; DYNISCO POLYMER PUMP; FEED BLOCKS; STERLING WINDER, DAYTON 2-TON HOIST AND ALL ASSOCIATED EQUIPMENT

**WELEX** 4.5" MODEL 450-V-L1 SCREW EXTRUDER W/42" FLAT EXTRUSION DIE; AEC WHITLOCK FEEDER/HOPPER SYSTEM, 250 HP DC MOTOR CONNECTED TO LUFKIN GEAR REDUCTION, 5 HEAT ZONE; (3) 18" X 54"W. FORM & COOLING ROLLS; 10' OF 48" W. ROLL CONVEYOR W/KNIFE SLITTERS FOR EDGE TRIM; (2) 8" X 48" PNEU. PINCH ROLLS; MOTORIZED TAKE UP REEL; SEM MDL 1012 GRINDER S/N 21384 W/ PNEUMATIC ROLL FEED AND AIR CONVEYOR BAGGING SYSTEM, S/N 1472; 54" WIDE SHEAR/SLITTER TABLE; DYNISCO CONTINUOUS SCREEN CHANGER; COMPOUND ANGLES AND (2) SETS OF PET FEED BLOCKS

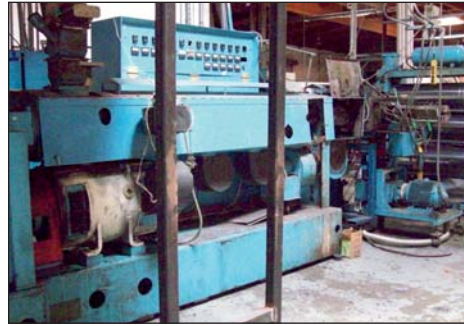
**STERLING** 3 1/2" 30:1 L/D EXTRUDER S/N 35899, W/ CONTINUOUS SCREEN CHANGER

**LABORATORY** 1" EXTRUDER W/ DOWNSTREAM SHEET LINE - NEWER CONTROLS

# INJECTION MOLDERS • WELEX EXTRUDERS



BROWN T350L TRIM PRESS



WELEX 4.5" MODEL 450-V-L1 EXTRUDER, 250



WELEX 4.5" MODEL 450 EXTRUDER, 250 HP



WELEX 3-ROLL STAND



ARMAC THERMOFORMING LINES



ARMAC THERMOFORMING LINES



VIEW OF STERLING EXTRUSION LINE



TRANE 100 TON CHILLER  
#CGWCD101RJNKK6237DPT



10,000 LB RIBBON BLENDER

## DRYING SYSTEM

2005 **NOVATEC** CONTINUOUS CRYSTALLIZER SYSTEM MODEL CCR-2000, 2000 LB PER HR, 2000 LB CAP, INSULATED HOPPER, PLC CONTROLS, 8" AIR LOCK, MODEL PHH-2000 CFM AIR DRYER, 3 CU FT, SS VACUUM RECEIVER W/ BLOW BACK, CYCLONE FILTER, SURGE HOPPER, FLOOR STANDS  
2000 **CONAIR** DRYER SYSTEM MODEL CD-2400, S/N 102503, W/ 8,600 LB CAP HOPPER, 15 HP BLOWER, VACUUM, HEATER, HOSES, ETC.  
1994 **WALTON/STOUT INC.** DRYER SYSTEM MODEL WSD-1200-MICRO, S/N 6082-81-02

## CHILLERS

**CHILLED WATER SYSTEM** INCLUDING: **TRANE** 100 TON CHILLER MODEL CGWCD101RJNKK6237DPT, S/N U93M09496 (1993); **BAC** 140 TON WATER TOWER; (2) 15 HP MOTOR; 20 HP PUMP;  
**ADVANTAGE WATER TANK** MODEL CPTS-1500-SS, S/N 37194 (1998 W/ (2) 25 HP MOTORS & 15 HP MOTOR  
2006 **TEMPTEK** PORTABLE 10 TON CHILLER MODEL CF-10A, S/N 94217  
2005 **TEMPTEK** PORTABLE 10 TON CHILLER MODEL CF-10A, S/N 94450

## GRANULATOR

**NELMOR** 150 HP GRANULATOR, 36" X 20", CYCLONE DUST COLLECTOR, BOTTOM DISCHARGE  
(3) **NELMOR** 40 HP GRANULATOR MODEL G1628, 16" X 28"  
(2) **NELMOR** 20 HP GRANULATOR ON WHEELS, 28" X 24"  
**NELMOR** 10 HP GRANULATOR MODEL F512, 48" AUGER FEED, DUST CYCLONE HOPPER, BOTTOM DISCHARGE  
**NELMOR** 5 HP GRANULATOR MODEL F211, 48" AUGER FEED, DUST CYCLONE HOPPER, BOTTOM DISCHARGE  
**CUMBERLAND** 75 HP GRANULATOR, 24" X 14", CYCLONE DUST COLLECTOR, BOTTOM DISCHARGE  
**FOREMOST** 15 HP GRANULATOR, 15" X 20", CYCLONE DUST COLLECTOR, BOTTOM DISCHARGE

## HOT STAMP PRESS

(2) 1991 **FRANKLIN** ROLL LEAF STAMPING PRESS MODEL 8500, S/N 54125/91 & 55356/91, 4 (1000) WATTS, 10" X 15" HEAD SIZE, PORTABLE

## DIE CUTTER

2007 **INDUSCO** 63" ROLLER PRESS DIE CUTTER MODEL UM933/1600, (ROLLMATIC 1600) S/N 03/2007, 64" INFEED AND EXIT TABLES W/ (4) 3 1/2" BELT CONVEYORS  
2005 **INDUSCO** 63" ROLLER PRESS DIE CUTTER MODEL U14933/1600, (ROLLMATIC 1600) S/N 07/2005, 64" INFEED AND EXIT TABLES W/ (4) 3 1/2" BELT CONVEYORS

## LABELER

(4) **SOUTHERN CALIFORNIA PACKAGING EQUIPMENT** LABELERS MODEL ST2100, POWER FEED & TAKEOFF CONVEYORS  
(3) **SOUTHERN CALIFORNIA PACKAGING EQUIPMENT** LABELERS MODEL ST1100, POWER FEED & TAKEOFF CONVEYORS

## SILO

**BROCK MFG.** CONE TYPE GALVINIZED CORRUGATED 1,700 CU FT STORAGE SILO, 60,000 LB APPROXIMATE CAPACITY  
GALVINIZED 6' X 6' X 16' H STORAGE SILO, 20,000 LB APPROXIMATE CAPACITY, 6 TUBE DISCHARGE

REGISTER & BID NOW AT [WWW.THOMSAUCTION](http://WWW.THOMSAUCTION)

# COMPLETE LOT CATALOG & PHOTOS AT WWW.THOMASAUCTION.COM



INDUSCO 63" ROLLER PRESS DIE CUTTER



INDUSCO 63" ROLLER PRESS DIE CUTTER



CALIFORNIA PACKAGING EQUIPMENT  
ST2100 LABELER



BRIDGEPORT SERIES I, 2HP  
VERTICAL MILL



GRIEVE #NB-550 OVEN



BROCK CONE TYPE GALVINIZED  
1,700 CU FT SILO

## RIBBON BLENDER

10,000 LB RIBBON BLENDER, BOTTOM DUMP, APPROX 10' L X 5' W X 6' D, MOUNTED ON STEEL LEGS, 40 HP MOTOR W/ IMCS HYDRAULIC DUMPER

300 LB RIBBON BLENDER, BOTTOM DUMP, APPROX 5' L X 2' W X 2' D, MOUNTED ON STEEL LEGS, 7.5 HP MOTOR

## SLITTER/REWINDER

RUF 72" SLITTER REWINDER W/ SINGLE SHAFT UNWIND STAND

## MILLING MACHINE

BRIDGEPORT 2 HP VERTICAL MILL, SERIES 1, S/N 196832, 9" X 48"

POWER FEED TABLE, NEWALL 2-AXIS DRO (2) BRIDGEPORT 8-SPEED 1 1/2 HP VERTICAL MILLIS, 9" X 42" POWER FEED

(3) BRIDGEPORT 1 HP VERTICAL MILLS  
1993 COMET VERTICAL MILL MODEL MV-5 CNC, DELTA/DYNAPATH AUTOCON CONTROLS

## LATHE

LEBLOND ENGINE LATHE 18" X 42" S/N D11215, 3-JAW CHUCK, THREADING, 425 RPM, MICROMETER STOP, CHASING DIAL

MONARCH MACHINE LATHE MODEL 10757  
SOUTH BEND LATHE MODEL CL1872

## SURFACE GRINDER

BROWN & SHARPE #5 HORIZONTAL SPINDLE SURFACE GRINDER S/N 1317, 8" X 24" PERM. MAG CHUCK

## OBI PRESS

1950 BLISS 35-TON OBI PRESS MODEL 21M, S/N H32820-HP15850, 27-1/2" X 19" BED

## BAND SAW

POWERMATIC 20" VERTICAL BAND SAW, MODEL 87, S/N 1-1806, W/ BLADE WELDER

## STRETCH WRAPPER

ITW MIMA 48" STRETCH WRAPPER MODEL N/A, S/N 17628

WULFTEC 60" DIA STRETCH WRAPPER MODEL WLP-150, S/N 15336-1-0504

## AIR COMPRESSOR & DRYERS

2002 GARDNER/DENVER 150 HP ROTARY SCREW AIR COMPRESSOR MODEL EBQ9F S/N 5123475, MODEL ELECTRA-SAVER II, AUTO SENTRY ES-CONTROLS, FULLY ENCLOSED

GARDNER DENVER 50 HP ROTARY SCREW AIR COMPRESSOR MODEL ECHQJB, S/N 802426, 50 HP MOTOR, ENCLOSED, W/ AIR RECEIVER TANK  
1998 INGERSOLL RAND 75 HPROTARY SCREW AIR COMPRESSOR, SSR, ENCLOSED

1988 LEROI 25 HP ROTARY SCREW AIR COMPRESSOR MODEL 25SST, S/N 51383, HORIZONTAL TANK MOUNTED

1973 JOY TWISTAIR 30 HP ROTARY SCREW AIR COMPRESSOR MODEL TA030TAN2B, S/N 1131898, HORIZONTAL TANK MOUNTED, W/ OIL/WATER SEPARATOR

1979 QUINCY 35 HP AIR COMPRESSOR MODEL 5120, S/N 877137-LS, HORIZONTAL TANK, 2-STAGE  
2005 ARROW COMPRESSED AIR DRYER MODEL F-500-4, S/N 2453907-05, (2) INLINE FILTERS

## FORKLIFT

1990 CLARK 4,000 LB LPG FORKLIFT MODEL GPX25, S/N GPX230-0314-7595-OF, 188" LIFT HT, 3 STAGE MAST, SIDE SHIFT, SOLID TIRES, ROPS

1989 CLARK 2,700 LB LPG FORKLIFT MODEL GCS15, S/N G127-0029-7115FA, 188" LIFT HT, 3 STAGE MAST, SIDE SHIFT, SOLID TIRES, ROPS

## TRAILER

1992 WABASH 53' TANDEM AXLE VAN TRAILER MODEL SA-102-CW, DUAL REAR DOORS

## TRUCK

1988 FORD PICKUP TRUCK MODEL F-150 XLT LARIAT, 210K MILES

## PLANT SUPPORT

2004 GRIEVE CONVECTION OVEN #NB-550; ROTEX VIBRATORY SCREENER #8520P; MILLER CP302 ARC WELDER; GRIZZLEY DRILL PRESS; INFRA MI-3-300CD ARC WELDER; CAROLINA SHOP PRESS; MILLER LMSW-52 PORTABLE SPOT WELDER; DEWALT DW758 PEDESTAL GRINDER; (9) 2,000 LB GAYLORD DUMPERS MFI MODULAR FLOW INDEX TESTER, OAKLAND #6000 FILM OPACITY METER, MELT POINT TESTER, TINIUS OLSEN #UE-4-78 EXTRUSION PLASTOMETER; (119) SECTIONS OF PALLET RACKING; DIE CARTS, PALLET JACKS, HAND & POWER TOOLS, VACUUM PUMPS, BLISS #21M PUNCH PRESS, JET DRILL PRESS, FAMCO #4 60" POWER SHEAR; TOOL BOXES, HAND DOLLIES, MOVABLE GUARD RAILS, ETC.

MUCH MORE!! COMPLETE LOT CATALOG WITH PHOTOS AT WWW.THOMASAUCTION.COM

# AUCTION INFORMATION [WWW.THOMASAUCTION.COM](http://WWW.THOMASAUCTION.COM)



CLARK 4,000 LB LPG FORKLIFT MODEL GPX25



1988 FORD F-150 XLT LARIAT PICKUP



1992 WABASH 53' TANDEM AXLE VAN TRAILER

## AUCTION INFORMATION

BY ORDER OF  
**RAPID MOLDED PRODUCTS**

**FEATURING: 2004 BROWN CS-4500 THERMOFORMER, (5) HUSKY 300-500 TON INJECTION MOLDERS, (2) WELEX 4.5" EXTRUSION LINES & MUCH MORE!!**

**Sale Site:**  
14325 Monte Vista Ave,  
Chino, California 91710

**Sale Date:**  
Final Bidding Period:  
Tuesday, June 30,  
11:00 AM (PDT)

**Inspections:**  
Monday, June 29,  
9 AM to 4 PM (PDT)

**Buyer's Premium**  
13 % Buyer's Premium

**Registration – Payment Terms**  
Register online at  
[www.thomasauction.com](http://www.thomasauction.com) –  
Auction Calendar – Rapid  
Molded Products. Payment  
is due in full within 48-hours of  
sale ending, by cash, certi-  
fied check or wire transfer  
(we do not accept credit  
cards). Any and all checks  
must be drawn on a United  
States Bank in US Funds. All  
purchases are subject to  
applicable federal, state  
and local taxes unless auc-  
tioneer is provided with a  
valid sales tax exemption  
certificate.



**Representation of Equipment**

All items are sold As Is -  
Where Is with all faults. The  
Auctioneer expressly dis-  
claims any warranty of mer-  
chantability or fitness for a  
particular purpose. It is the  
bidders' sole responsibility to  
examine or inspect items  
prior to placing their bids.  
Please Note Items Offered  
May Be Subject To Prior Sale

**THOMAS INDUSTRIES  
APPRAISAL DIVISION**  
Accurate appraisals  
supported by over 56  
years of conducting  
worldwide auctions  
and liquidations.

Call (203) 458-0709 for  
a confidential appraisal  
of your assets. One piece  
of equipment or  
an entire plant.



**THOMAS INDUSTRIES, INC**  
2414 BOSTON POST RD.  
GUILFORD, CT 06437  
203 458 0709  
[GAVEL@THOMASAUCTION.COM](mailto:GAVEL@THOMASAUCTION.COM)

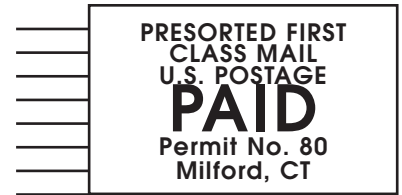
**ALL ITEMS SUBJECT TO PRIOR SALE**

**FINAL BIDDING PERIOD: JUNE 30, 11:00 AM (PDT)**

Under Management of:



**THOMAS INDUSTRIES**  
2414 Boston Post Road  
Guilford, CT 06437-2310  
(203) 458-0709 • (203) 458-0727 Fax  
<http://www.thomasauktion.com>



## MAJOR ONLINE AUCTION

By order of

## RAPID MOLDED PRODUCTS

14325 MONTE VISTA AVE,  
CHINO, CALIFORNIA 91710

FORWARDING SERVICE REQUESTED

**ONLINE BIDDING ONLY**

**FIRST LOT CLOSES:**

**JUNE 30, 11:00 AM (PDT)**

**INJECTION MOLDERS • THERMOFORMERS • EXTRUSION LINES**

**FEATURING: 2004 BROWN CS-4500 THERMOFORMER,  
(5) HUSKY 300 to 500 TON INJECTION MOLDERS,  
(2) WELEX 4.5" EXTRUSION LINES & MUCH MORE!!**



**New  
1999**

**HUSKY G400-RS 85/70 INJECTION MOLDER**



**BROWN T350L TRIM PRESS**

**AUCTION INFORMATION: THOMAS INDUSTRIES 203-458-0709**