

ONLINE PRINTING AUCTION

**COMPLETE PLANT CLOSURE:
DIE CUTTERS, FOLDER/GLUERS, SHEET FED PRESSES,
DIGITAL PRINT SYSTEMS, PLATE MAKING, ETC.**

By Order of :

Golden Rule Inc and Budget Printing Inc.

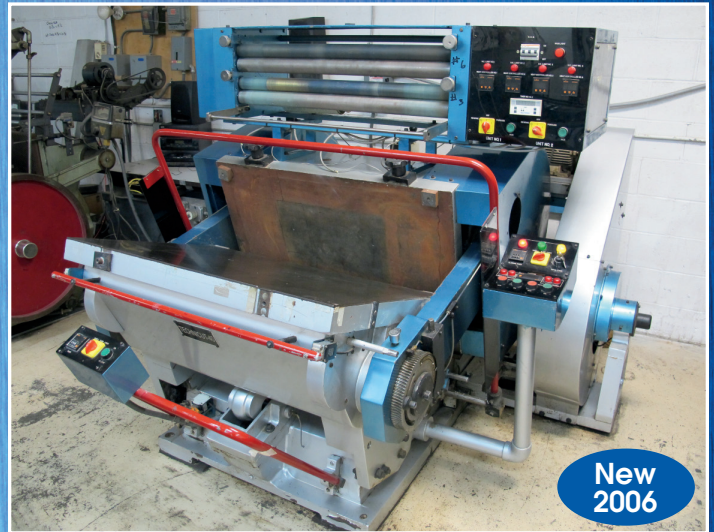
1286 & 1284 Surfside Industrial Park, Myrtle Beach, South Carolina 29575

SALE DATE: THURSDAY, AUGUST 3, 1:00 PM (ET)

INSPECTION: WEDNESDAY, AUGUST 2, 9 AM TO 4 PM (Local Time)



Original Heidelberg Die Cutter Model S-Line



Technicut Clam Shell Die Cutter / Foil Stamper, 28" x 40"



Roland SolJet XC-540 Large Format Printer / Cutter



Kluge-Haskins Hyperfold II Automatic Pocket Folder/Gluer

Sale under Management of:



**THOMAS INDUSTRIES &
ADVANCED PRINT TECHNOLOGIES**

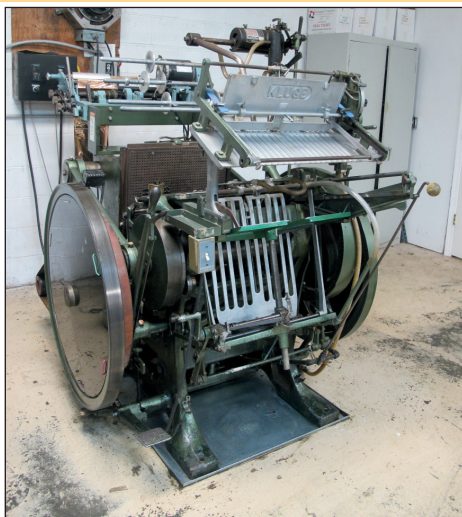
THE NATIONS LEADING FULL SERVICE PRINTING & GRAPHICS TEAM



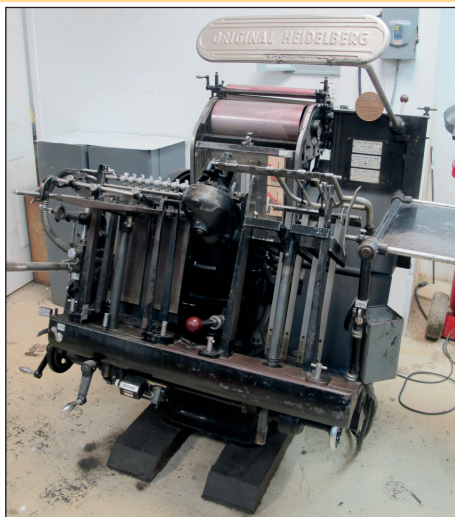
WORLDWIDE AUCTION & APPRAISAL SERVICES

COMPLETE PLANT CLOSURE: DIE CUTTING, PRINTING, CONVERTING, ETC.

KLUGE DIE
CUTTER / FOIL
STAMPER,
12" X 18"



ORIGINAL
HEIDELBERG
WINDMILL
PRESS,
10" X 15"



ROLAND SOLJET XC-540 LARGE FORMAT
PRINTER / CUTTER



RYOBI 2-COLOR OFFSET PRESS MODEL
3302M



BOURG DIGITAL BOOKLET MAKER

DIE CUTTER / FOIL STAMPERS

Original Heidelberg Die Cutter Model SBG S/N SB18331, 21.25" x 30.25"

Original Heidelberg Die Cutter Model S-Line, S/N 7425, 21.25" x 28.5"

Technicut Clam Shell Die Cutter / Foil Stamper, 28" x 40" (New 2006) 4-Zone, w/Sequencer

Kluge Die Cutter / Foil Stamper, 12" x 18", S/N A126378

Kluge Die Cutter / Foil Stamper, 12" x 18", S/N 1225214

Kluge Die Cutter / Embosser, 12" x 18", S/N NB128959

Meihle Vertical Die Cutter Model V-50 w/Dies

WINDMILL PRESSES

Original Heidelberg Windmill Press, 10" x 15", S/N 126

ROLAND - PRINT/CUT

Roland SolJet XC-540 Large Format Printer / Cutter, S/N ZX55745

PRINTING PRESSES - SHEET FED

Ryobi 2-Color Offset Press Model 3302M, S/N 4405, Crestline Dampening, w/Register Punch #RP520-F, Approximately 12 Million Impressions

BOOKLET MAKER

Bourg Digital Booklet Maker, w/ Bourg 2-Head Stitcher Model AGR, Multigraphics Fold Unit, Multigraphics Trim Unit, Delivery Unit

FOLDER/GLUERS

Kluge-Haskins Hyperfold II Automatic Pocket Folder/Gluer, S/N 02181, Haskins 4' Variable Speed Stack-A-Veyor, Totalizer & Batch Counter, Haskins Final Fold Unit, (2) Valco Glue Units, Valco VC200 Pattern Generator

FOLDERS

Baum Folder Model 714, 14" x 20" S/N 87F014, Bench Type

Standard Pro-Fold Folder Model 1420V3, S/N 16-213, Bench Type

SADDLE STITCHERS

Rosback Semi-Automatic Saddle Stitcher Model 202, S/N 202T722320SF, with (2) Acme Champion Stich Heads

PAPER CUTTERS

Polar Mohr 36" Paper Cutter Model 92CF, S/N 5111588, Microcut Jr Programmable Control

DRILLS

Challenge Paper Drill Model JF, S/N 62610, Single Spindle

PLATE MAKER

A B Dick DPM 2340 Plate Maker Model 21480000, S/N 49-503 (New 2002)

BALERS

(2) Load King Vertical Baler Model WB6030-WL, S/N 8546 & 7239

Load King Vertical Baler Model V3630, S/N 7161

VEHICLES

Isuzu 14' Box Truck, Diesel, 189k Miles, Vin# JY7006441

FORKLIFTS

Nissan 4400 lb LPG Forklift Model MCPL02A25LV, Triple Mast, Side Shift

PLANT SUPPORT

ISP Stitcher Model 93A, S/N 7082 (New 1997), **Challenge** Paper Jogger Model A, **Sandvik** Pneumatic Bender, **Hamilton** 40" x 65" Steel Layout Table, **Hemold** Benders and Creasers, **Graphtec** Cutting Pro Die Plotter Model FC 2230, **Xante** Envelope Printers Model Accel-A-Writer, **Dynaric** Strapper Model DF-20, **Husky** 5 HP Vertical Tank Air Compressor, H.D. Metal Shelving, Paper Shredders, Storage Cabinets, etc

SALE DATE: THURSDAY, AUGUST 3, 1:00 PM (ET)



KLUGE-HASKINS HYPERFOLD II AUTOMATIC POCKET FOLDER/GLUER



STANDARD PRO-FOLD FOLDER MODEL 1420V3



POLAR MOHR 36" PAPER CUTTER MODEL 92CF



SANDVIK PNEUMATIC BENDER



SHARPE AR335 DIGITAL IMAGER COPIER



NISSAN 4400 LB LPG FORKLIFT # MCPL02A25LV



A B DICK DPM 2340 PLATE MAKER MODEL 21480000



DYNARIC STRAPPER MODEL DF-20



(2) LOAD KING VERTICAL BALER # WB6030-WL



ISUZU 14' BOX TRUCK, DIESEL, 189K MILES

AUCTION INFORMATION

ONLINE AUCTION - COMPLETE PLANT CLOSURE

By Order of:

**Golden Rule Inc &
Budget Printing Inc.**

1286 & 1284 Surfside Industrial Park,
Myrtle Beach, South Carolina 29575

SALE DATE:
THURSDAY, AUGUST 3,
1:00 PM

INSPECTION:
WEDNESDAY, AUGUST 2, 9 AM TO 4 PM

Buyer's Premium: 15%

Staggered Closing Times: Lots Have 60-Second Staggered Closing Times.

Auto Extend Bidding: If a bid is submitted with less than 3-minutes remaining, the closing time for that lot will be extended by 3-minutes.

Payment Due In Full: Friday, August 4, 2017

Payment Types: Certified Check or Wire Transfer

As-Is Where-Is: All Items Are Sold "As-Is Where-Is" With No Warranty or Guarantee of Operating Condition. Auctioneer Strongly Recommends That Buyers Inspect Equipment Prior to Bidding.

Removal: All items must be removed by Friday, August 18, 2017. Removal Hours: 9 AM to 4 PM (M-F). Removal Begins Monday, August 7, 2017.

Removal Costs: Buyers are fully responsible for all cost to remove their purchases. Please get removal quotes prior to bidding and bid accordingly.

Disclaimer: Auctioneer is not responsible for errors, omissions, additions or deletions. Items offered may not necessarily be sold as described and/or photographed. Buyers should verify all aspects of their potential purchases during inspection as all items offered will be sold "as is, where is" with all faults. Please check with the auctioneer's office for additions or deletions

TECHNICAL INFORMATION
Fred Moss (781) 844-1645

PAYMENT INFORMATION
Irina Lekhmus (203) 458-0709 X108

ONSITE INFORMATION
Jon Standish (203) 915-3430



Under Management of:
THOMAS INDUSTRIES
2414 Boston Post Road
Guilford, CT 06437-2310
(203) 458-0709 • (203) 458-0727 Fax
<http://www.thomasauction.com>

Under Management of:



THOMAS INDUSTRIES
2414 Boston Post Road
Guilford, CT 06437-2310
(203) 458-0709 • (203) 458-0727 Fax
<http://www.thomasauction.com>



PRESORTED FIRST CLASS
MAIL
U.S. POSTAGE
PAID
Permit No. 80
Milford, CT

ONLINE PRINTING AUCTION COMPLETE PLANT CLOSURE

By Order of :

**Golden Rule Inc &
Budget Printing Inc.**

1286 & 1284 Surfside Industrial Park,
Myrtle Beach, SC 29575

SALE DATE:
THURS., AUGUST 3, 1:00 PM

INSPECTION:
WEDNESDAY, AUGUST 2,
9 AM TO 4 PM (Local Time)

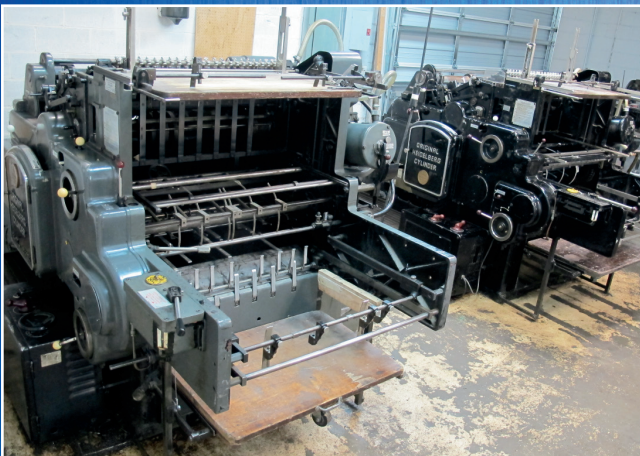
Buyer's Premium: 15%

FORWARDING SERVICE REQUESTED

ONLINE PRINTING AUCTION – COMPLETE PLANT CLOSURE

By Order of : **Golden Rule Inc and
Budget Printing Inc.**
1286 & 1284 Surfside Industrial Park, Myrtle Beach, SC 29575

SALE DATE:
THURSDAY, AUGUST 3, 1:00 PM (ET)
INSPECTION: WEDNESDAY, AUGUST 2, 9 AM - 4 PM



HEIDELBERG ORIGINAL CYLINDER DIE CUTTERS



RYOBI 2-COLOR OFFSET PRESS MODEL 3302M

Sale under Management of:



**THOMAS INDUSTRIES &
ADVANCED PRINT TECHNOLOGIES**

THE NATIONS LEADING FULL SERVICE PRINTING & GRAPHICS TEAM

WORLDWIDE AUCTION & APPRAISAL SERVICES

