

LIVE ONSITE & WEBCAST AUCTION

LARGE 2-DAY AUCTION

OVER 2000 LOTS • COMPLETE CLOSURE OF CNC MACHINE SHOP

BY ORDER OF SECURED CREDITOR

ROCON MANUFACTURING

606 HAGUE STREET, ROCHESTER, NEW YORK 14606

SALE DATE: September 21st & 22nd, Starting at 10:30 AM (ET) Each Day

INSPECTION DATE: SEPTEMBER 20TH, 9 AM TO 4 PM



HAAS # VF-2SSYT CNC VMC



MORI-SEIKI # NH-4000-DCG CNC HMC



MAZAK #FH-4800 CNC HMC



YASDA # YBM-700-6AP CNC HMC

Sale under Management of:

Thomas Industries, Inc.

2414 Boston Post Road, Guilford, CT 06437-2310

Phone (203) 458-0709 • Fax (203) 458-0727

email: gavel@thomasauction.com • www.thomasauction.com



(40) LATE CNC MACHINES



New
2000

DOOSAN # V-420 CNC VTL



OM,LTD. # VL-4N CNC VTL



VIEW OF MITSUI-SEIKI # HU-63A
FANUC CONTROL



VIEW OF MORI-SEIKI # NH-4000 HIGH
PRESSURE COOLANT SYSTEM



Thru-Spindle
Coolant

4-Axis

New
2000

MORI-SEIKI # SH-403 CNC HMC



10,000 RPM

New
1997

NIIGATA # SPN-50 CNC HMC



New
1998

12,000 RPM

MITSUI-SEIKI # HU-63A CNC HMC



VIEW OF MORI-SEIKI # NH-4000 FANUC
CONTROL



New
1997

12,000 RPM

MITSUI-SEIKI # HS-5A CNC HMC

CNC JIG BORERS

(New 1996), (2) YASDA #YBM-640V, 3-Axis CNC "Jig Borer" Type Vertical Machining Centers, S/N 's VP-278 & VP-406, W/ 17.7" x 27.6" Table, X-23.6", Y-15.7", Z-13.8", (30) ATC, 50-10,000 R.P.M., BT-40 Spindle, 720 Lb. Table Load Capacity, Fanuc 16M CNC Control (S/N 406), FANUC CNC Control 15MB & Rigid Tapping (S/N 278)

CNC VERTICAL TURRET LATHE

(New 2000), DOOSAN #V-420, 2-Axis CNC Vertical Turret Lathe, S/N LRA-1012 W/ 12" Diameter 3-Jaw Hydraulic Chuck, X-13.8", Z-16.1", (12) Tool Turret, 25-2,500 R.P.M., 23.8"/13.8" Maximum Swing/Turning Diameter, 200 Lb. Table Load Capacity, 30 H.P., Fanuc 18T CNC Control
(New 1987), OM, Ltd. #VL-4N, 2-Axis CNC Vertical Turret Lathe, S/N MN873893 ,W/ 15" Diameter Table, X-11.8", Z-17.7", (6) Position Turret Head on Rail, 20-2,000 R.P.M., 31.49"/15.8" Maximum Swing/Turning Diameter, 220 Lb. Table Load Capacity, AC Servo Motors, Chip Conveyor, 30 H.P., Fanuc 10TF CNC Control

CNC MACHINING • TOOLROOM • INSPECTION • SUPPORT

CNC HORIZONTAL MACHINING CENTERS

(New 2008) (2) KITAMURA #HX250iF MyCenter , 4-Axis Horizontal Machining Centers S/N's 81311 (1,782 Cutting Hours) & 81321 (4,045 Cutting Hours), W/ Dual 10.25" Pallets, X & Y-12", Z-13", (40) ATC, 150-15,000 R.P.M., BT-30 Spindle, 1,889 I.P.M. Rapid Traverse Rate, 590.6 I.P.M. Axis Feed Rate, 1.2 Second Tool Change Time, Coolant Thru Spindle, Fanuc 18i-MB CNC Controls

(New 2006 & 2005)(2) Mori-Seiki #NH-4000-DCG, 4-Axis Horizontal Machining Centers, S/N's NH401EE0598 (9,276 Cutting Hours) & NH401FF1244 (6,175 Cutting Hours), W/ Dual 15.75" Pallets, X & Y-22", Z-24.8", (60) ATC, 14,000 R.P.M., CAT-40 Spindle, High Pressure Coolant Thru Spindle, 880 Lb. Table Load Capacity, Chip Conveyor, Rigid Tapping, Mori # MSX-501 (S/N 598) & MSX 501 III (S/N 1244) with MAPPS CNC Controls

(New 2000) MORI-SEIKI #SH-403, 4-Axis Horizontal Machining Center, S/N 1185, W/ Dual 15.75" Pallets, X-22", Y & Z-20", (40) ATC, 12,000 R.P.M., CAT-40 Spindle, Cool Jet High Pressure Coolant Thru Spindle, Chip Conveyor, Rigid Tapping, Mori-MSG 501 (Fanuc 18iMB) with MAPPS CNC Control

(New 2001) MAZAK #FH-4800, 3-Axis Horizontal Machining Center, S/N 154589, W/ Dual 15.75" Pallets, X & Z-22", Y-24", (80) ATC, 35-12,000 R.P.M., CAT-40 Spindle, Coolant Thru Spindle, Chip Conveyor, Rigid Tapping, Mazatrol Fusion 640M CNC Control

(New 2000) YASDA #H-30i "5-Axis" Horizontal Machining Center, S/N 00-HS-029 ,W/ Dual 11.81" Pallets & A-Axis Table Size, X-25.6", Y & Z-22", B-Axis Turn Range: minus120 to + 45 degrees, A-Axis Minimum Indexing Angle .001 Degree, (40) ATC, 120-12,000 R.P.M., BT-40 Spindle, Coolant Thru Spindle, Chip Conveyor, Fanuc 16iM CNC Control

(New 1993) YASDA #YBM-700N-6AP-6PLS 6-Pallet, 3-Axis Horizontal Machining Center, S/N 93-X1083 , W/ (6) 24.8" x 24.8" Pallets, X-35.4", Y & Z 31.5", 240 (4 x 60) ATC, 20-6,000 R.P.M., CAT-50 Spindle, High Pressure Coolant Thru Spindle, Chip Conveyor, Probe, 2,200 Lb. Table Load Capacity, Rigid Tapping, Mascot Tool Life Management, Fanuc 15MB CNC Control

(New 1998) MITSUI-SEIKI #HU-63A , 3-Axis Horizontal Machining Center, S/N 264 , W/ Dual 24.8" Pallets, X-35.4", Y & Z-31.5", (60) ATC, CAT-50 Spindle, 120-10,000 R.P.M., Chip Conveyor, 2,700 Lb. Table Load Capacity, Rigid Tapping, Fanuc 15M CNC Control

(New 1997) NIIGATA #SPN-50, 3-Axis Horizontal Machining Center, S/N 46500064, W/ Dual 19.7" Pallets, X/Y/Z-29.5", (60) ATC, CAT-50 Spindle, 50-12,000 R.P.M., Chip Conveyor, 1,320 Table Load Capacity, Rigid Tapping, Fanuc 16M (New Spindle Installed 2009)

(New 1997) MITSUI-SEIKI #HS-5A ,4-Axis Horizontal Machining Center, S/N 717 , W/ Dual 24.8" Pallets, X-33.5", Y-27.5", Z-29.5", (60) ATC, 120-12,000 R.P.M., CAT-50 Spindle, Chip Conveyor, 2,645 Table Load Capacity, Rigid Tapping, Fanuc 15M CNC Control

(New 1998) HITACHI-SEIKI #HG-500-II, 3-Axis Horizontal Machining Center, S/N HG-52200 , W/ Dual 20" Pallets, X-30", Y-27.5", Z-25.5", (40) ATC, 20-6,000 R.P.M., CAT-50 Spindle, 20-6,000 R.P.M., Chip Conveyor, 2,000 Lb. Table Load Capacity, Rigid Tapping, Hitachi-Seicos 10M CNC Control



YASDA # H-30i "5-AXIS" CNC HMC



VIEW OF YASDA # YBM-700-6AP CNC HMC COOLANT SYSTEM

COMPLETE AUCTION INFORMATION - WWW.THOMASAUCTION.COM



VIEW OF YASDA # YBM-700-6AP CNC HMC TOOLCHANGER (120) CAP.

(New 2006) (4) HAAS #VF-2SSYT, 4 -Axis Vertical Machining Centers, S/N's 1051037, 1051321, 1051483, 1051850, W/ 18" x 36" Table, X-30", Y & Z-20", Side Mounted (40) ATC, 12,000 R.P.M., CAT-40 Spindle, Chip Auger, 1,500 Lb. Table Load Capacity, Rigid Tapping, 30 H.P. High Torque Spindle Drive With 2-Speed Gear Box, HAAS CNC Controls, (S/N 1321 With Renishaw Probe)

(New 2004) DAEWOO #DMV-4020D "Diamond Series", 3-Axis Vertical Machining Center, S/N AVE1948, W/ 19.7" x 47.2" Table, X-40.2", Y-20.1", Z-24.6", (16) ATC, 10-6,000 R.P.M., CAT-50 Spindle, Chip Conveyor, 1,760 Table Load Capacity, Fanuc 21iMD CNC Controls

(New 2000) DAEWOO #DMV-500 "Diamond Series", 4-Axis Vertical Machining Center, S/N AV5S0693, W/ 19.7" x 47" Table, X-40", Y-19.7", Z-20", (30) ATC, 8,000 R.P.M., CAT-40 Spindle, Chip Conveyor, Rigid Tapping, 1,764 Lb. Table Load Capacity, Fanuc 21M (Extended Memory)

CNC VERTICAL MACHINING CENTERS

(New 1998) (2) DAEWOO #DMV-400 "Diamond Series" Dual Pallet, 3 -Axis Vertical Machining Centers S/N's AV3S0303 & AV30335, W/ X-22.4", Y-15.7", Z-22.4", Dual 17.7" x 25.6" Pallets - 180 Degree Indexing Capability, (30) ATC, 45-10,000 R.P.M., CAT-40, 660 Lb. Per Pallet Load Capacity, Mitsubishi Meldas 520M (S/N 303) & Fanuc 18M (S/N 335) CNC Controls

(New 1995) MATSUURA #RA-IVF, 4 -Axis Vertical Machining Center With Pallet Changer, S/N 950211169, W/ 19.3" x 39.4" Table, X-40.2", Y & Z-20.1", (30) ATC, 30-8,000 R.P.M., CAT-40 Spindle, Chip Conveyor, High Pressure Coolant Thru Spindle, 1,102 Lb. Table Load Capacity, Rigid Tapping, Yasnac I-80 CNC Control

(New 1997) MITSUBISHI #MV-60E, 3-Axis Vertical Machining Center, S/N CV3509, W/ 23.6" x 55.1" Table, X-39.4", Y-23.6", Z-21.7", (40) ATC, 20-6,000 R.P.M., CAT-50 Spindle, 3,300 Lb. Table Load Capacity, Rigid Tapping, 30 H.P., Mitsubishi Meldas 520M CNC Control

(New 1996) MITSUBISHI #MV-60C, 3 -Axis Vertical Machining Center, S/N V60C091, W/ 23.6" x 55.1" Table, X-39.4", Y-23.6", Z-21.7", (40) ATC, 20-4,000 R.P.M., CAT-50 Spindle, 3,300 Lb. Table Load Capacity, Rigid Tapping, Mitsubishi Meldas 520M CNC Control



VIEW OF YASDA # YBM-700-6AP CNC HMC INTERIOR



VIEW OF YASDA # H-301 "5-AXIS" CNC HMC INTERIOR

(New 1988) MATSUURA #MC-800V, 4-Axis Vertical Machining Center, S/N 880506779, W/ 18.1" x 46" Table, X-31.5", Y-18.1", Z-20", (30) ATC, 25-4,500 R.P.M. BT-40 Spindle, 1,540 Lb. Table Load Capacity, Yasnac MX-3 CNC Control

(New 1988) (2) MATSUURA #MC-510V "Tiger" 3-Axis Vertical Machining Centers, S/N 881207090, W/ 14.9" x 29.9" Table, X-20", Y-14", Z-18.1", (20) ATC, 60-6,000 R.P.M., BT-35 Spindle, 880 Lb. Table Load Capacity, Yasnac MX-3 CNC Control

LARGE ASSORTMENT OF TOOLING & SUPPORT



VIEW OF YASDA # YBM-700-6AP CNC HMC
FANUC CONTROL



New
1998

HITACHI-SEIKI # HG-500-II CNC HMC



Large
Capacity

New
2004

DAEWOO # DMV-4020D "DIAMOND SERIES"
CNC VMC



4-Axis

New
2000

DAEWOO # DMV-500 "DIAMOND SERIES"
CNC VMC



New
1997

MITSUBISHI # MV-60E CNC VMC



4-Axis

MATSUURA # MC-800V CNC VMC



4-Axis

New
1995

MATSUURA # RA-IVF CNC VMC



4-Axis

New
1995

MATSUURA # RA-IVF CNC VMC



1 of 2

MATSUURA # MC-510V "TIGER" CNC VMC

CNC ROTARY TABLES

- (4) HAAS #HRT-210, 8.3" CNC Rotary Tables (New 2006)
- (1) TSUDAKOMA 12", #RNCV-301R CNC Rotary Table
- (1) TSUDAKOMA 12", #RNCM-301R CNC Rotary Table
- (1) KOMA 9 3/4" CNC Rotary Table



VIEW OF YASDA # H-30I "5-AXIS" CNC
HMC HIGH PRESSURE COOLANT SYSTEM



New
1996

MITSUBISHI # MV-60C CNC VMC

HIGH QUALITY YASDA & HAAS CNC



HAAS # VF-2SSYT CNC VMC'S



YASDA # YBM-640V CNC "JIG BORER" TYPE VMC



HAAS 4TH AXIS ROTARY TABLE



HAAS # HRT-210 CNC ROTARY TABLES



TSUDAKOMA CNC ROTARY TABLE



PARLEC # TMM-2000 TOOL SETTER

CNC LATHES

(New 2000) DAEWOO #200-B Lynx, 2-Axis CNC Chucking Lathe, S/N L2001070, W/ 13.78"/11" Maximum Swing/Turning Diameter, X-6.3", Z-12.9", (12) Tool Turret, 40-4,000 R.P.M., 8" Diameter Three-Jaw Chuck, Chip Conveyor, Tool Eye, Mitsubishi M64L CNC Control

(New 1988) MORI-SEIKI #SL-45B, 2 -Axis Turning Center, S/N 34, W/ 26.4"/19.3" Maximum Swing/Turning Diameter, X-10.6", Z-67.9", (12) Tool Turret, 6-1,500 R.P.M., 15" Diameter Three-Jaw Chuck, 4.7" Spindle Bore, 3.6" Maximum Bar Diameter, Tailstock, Chip Conveyor, 30 H.P., Fanuc 10TF CNC Control

(New 1987) DAEWOO #12L Puma, 2 -Axis Turning Center, S/N 440012, W/ 22.8"/18.9" Maximum Swing/Turning Diameter, X-10.2", Z-41.3", (10) Tool Turret, 20-2,500 R.P.M., 12" Diameter Three-Jaw Chuck, 3.5" Spindle Bore, 3" Maximum Bar Diameter, Tailstock, Chip Conveyor, 30 H.P., Fanuc 10TF CNC Control

(New 1986) DAEWOO #10S Puma, 2 -Axis Turning Center, S/N 380114, W/ 22.8"/15" Maximum Swing/Turning Diameter, X-7.9", Z-31", (12) Tool Turret, 20-3,150 R.P.M., 8" Diameter Three-Jaw Chuck, 3" Spindle Bore, 2.5" Maximum Bar Diameter, Tailstock, Chip Conveyor, 25 H.P., Fanuc 10TF CNC Control

(New 1990) OKUMA #LB-25, 2 -Axis Turning Center, S/N 0210-9125, W/ 18.9"/14.2" Maximum Swing/Turning Diameter, X-9", Z-26.4", (12) Tool Turret, 65-3,500 R.P.M., 10" Diameter Three-Jaw Chuck, 3.2" Spindle Bore, 3" Maximum Bar Diameter, Tailstock, Chip Conveyor, OSP 5020L CNC Control

(40) CNC MACHINES 3-4 & 5 AXIS AVAILABLE



Large Capacity

4.7" Spindle Hole

MORI-SEIKI # SL-45B CNC LATHE



Large Capacity

12" Chuck

DAEWOO # 12L PUMA CNC LATHE



DAEWOO # 10S PUMA CNC LATHE



New 2000

DAEWOO # 200B LYNX CNC LATHE



New 1990

OKUMA # LB-25 CNC LATHE



VIEW OF FIXTURE PLATES AND TOMBSTONES



Several Available

TOMBSTONES FOR MACHINING CENTERS



VIEW OF CAT # 40 CNC TOOLHOLDERS



VIEW OF BIG KAISER CNC MODULAR BORING TOOLING



VIEW OF CAT # 40 & # 50 CNC TOOLHOLDERS



CAT # 50 RIGHT ANGLE HEAD

INSPECTION:

COMPARATORS

(New 1997) STARRETT #HB350 14" Optical Comparator, S/N 20125 .5" x 15.4" Table/Stage, 8"/4" Horizontal/Vertical Travel, Tungsten Halogen Profile/Fiber Optic Profile/Surface Illumination, 10X Lens, Quadra-Chek 2000 Measurement DRO W/ Edge Detection

SALE DATES: SEPTEMBER 21ST & 22ND, 10:30 AM (ET) EACH DAY

INSPECTION • BROWN & SHARPE • STARRETT CMM'S



BROWN & SHARPE #9-12-8 "GLOBAL" DCC CMM

(New 2006) BROWN & SHARPE # 7-10-7 DCC Bridge-Type Coordinate Measuring Machine, S/N 0606-7139, Roller Bearing Design, X-27.6", Y-39.4", Z-25.6, Work Capacity: X-31.7", Y-48.8", Z-30.7", 1,995 Lb. Max. Part Weight, #PH-10T Renishaw Motorized Probe, TP20 Cartridge, MCR20 Rack, FB2 Controller, PC-DMIS Software

(New 2004) BROWN & SHARPE # 9-9-8 Global Image DCC Bridge-Type Coordinate Measuring Machine, S/N 0404-6006, Air Bearing Design, X & Y-35.4", Z-31.5, Work Capacity: X-40.6", Y-66.9", Z-33.1", 2,601 Lb. Max. Part Weight, #PH-10MQ Renishaw Motorized Probe, TP200 Cartridge, SCR 200 Probe Rack, B3C Controller, PC-DMIS Software



OVERVIEW OF CAT # 40 & # 50 CNC TOOLHOLDERS



BROWN & SHARPE # 7-10-7 DCC CMM

COORDINATE MEASURING MACHINES (4)

(New 2001) BROWN & SHARPE # 9-12-8 Global Image DCC Bridge-Type Coordinate Measuring Machine, S/N 0801-6126, Air Bearing Design, X-35.4", Y-47.2", Z-31.5, Work Capacity: X-40.6", Y-78.7", Z-33.1", 2,886 Lb. Max. Part Weight, #PH-10MQ Renishaw Motorized Probe, TP200 Cartridge, B3C Controller, PC-DMIS Software (Updated 2005)

(New 1996) STARRETT #RGDC-4028-24 DCC Bridge-Type Coordinate Measuring Machine, S/N SD5082, X-40", Y-28", Z-24", #PH-9A Renishaw Probe, W/ PC and Apogee Software

MOORE #M18-Z Ultra Precision Universal Measuring Machine, S/N M-284Z, .000005" Resolution

(New 2001) PARLEC #TMM-Series 2000 Par-Setter Tool Presetting & Measuring Machine, S/N ZG-1525 W/ Metronics Tool-Check 200 Digital Display

WILSON "Rockwell" # 3-JR Hardness Tester, 8" Vertical Capacity, 5-1/4" Vertical Reach, B & C Scales

PRATT & WHITNEY 48" x 72" x 10" Black Granite Surface Plate, Grade A, 2- Ledge, W/ Stand

STARRETT 36" x 60" x 8" Crystal Pink Granite Surface Plate, Grade A, W/ Stand

STARRETT 36" x 48" x 8" Crystal Pink Granite Surface Plate, Grade A, W/ Stand

STARRETT 24" x 36" x 8" Crystal Pink Granite Surface Plate, Grade B, W/ Stand

Large Quantity of Inspection Tooling including Digital Micrometers, Micrometers, Gage Blocks, Angle Plates, Parallels, Depth Gages, Bore Gages, Intra-Mikes, Calipers, Sunnen Gages, Thread Gages, Profilometers, Thread Gages, Deltronic Pin Gages, Pin gages, Ring Gages, Edmunds Gages, Federal Gages, Starrett Height Gages, Mitutoyo Height Gages, Torque Wrenches, (3) Brown & Sharpe CMM's, Starrett CMM, Centers and Much Much More!!

INSPECTION • TOOLROOM • PLANT SUPPORT

STARRETT # HB-350 OPTICAL COMPARATOR



New 1997

ROCKWELL-WILSON # 3-JR HARDNESS TESTER



New 1996



STARRETT # RGDC-4028-24 DCC CMM

VIDMAR CABINETS & INSPECTION TOOLING



MOORE # M-18Z "ULTRA PRECISION" MEASURING MACHINE



SMALL SAMPLE OF INSPECTION TOOLING



VIDMAR WORKBENCH



DELTRONIC PIN GAGES



COLCHESTER ENGINE LATHE # MASCOTT-1600

New 1987

CONVENTIONAL MACHINE TOOLS:

ROTARY SURFACE GRINDER (2)

(New 2002) DCM TECH #IG-280-SD 24" Horizontal Spindle Rotary Surface Grinder, S/N 20410, 24" Work Table Diameter, 12" Maximum Work Height Under 12" or 15" Diameter Segmented Grinding Wheel, 27" Maximum Swing, Servo Driven Z-Axis, 700-2,700 R.P.M. Variable Speed Grinding Spindle, 5-45 R.P.M. Table Speed, 20 H.P., Paper Band Coolant Filtration, #E-700 PLC (Programmable Control)

BLANCHARD #11-16 ,16" Rotary Surface Grinder S/N 6528

VERTICAL MILLERS (5)

(4) BRIDGEPORT Series I 2HP Vertical Mills, S/N's 242335, 212191, 201589, 193201, 9" x 42" & 9" x 48" (242335) Power Feed Tables, Newall, Quality Measurement Systems (193201), & Bridgeport (242335) Two-Axis Digital Readouts, 2 H.P. Variable Speed Milling Heads

BRIDEPORT Cherying/Shaping Attachment (S/N 201589)

OKK # MH-5-VJ "Bed-Type" Vertical Mill S/N 570, 18" x 89" Table, #50 N.S.T. Spindle, 22-1,400 R.P.M., 25 H.P.

TOOLROOM • TOOL & CUTTER GRINDERS • LATHES



MOORE # 3 JIG BORER



MYFORD CYLINDRICAL GRINDER



MOORE # 3 JIG GRINDER



REID "ROLLERWAY" SURFACE GRINDER



Late Model

SENAKA FALLS-ROYAL OAK # 25-RO RELIEF GRINDER



New 1987

CINCINNATI # MT "MONOSET" TOOL & CUTTER GRINDER



BRIDGEPORT 2HP SERIES I VERTICAL MILLER



BRIDGEPORT 2HP SERIES I VERTICAL MILLER

LATHES

(New 1987) CLAUSING COLCHESTER # Mascott 1600 Engine Lathe, S/N 7/0218/16497DD , 17" x 60" Cap., Inch/Metric Threading, 3-1/16" Spindle Bore, D1-8 Camlock Spindle Nose, 4 & 6 Jaw Chucks, Steady Rest, 10 H.P.

(New 1978) HARDINGE #HLV-H-EM Inch/Metric Precision Toolroom Lathe, S/N 7800-T ,Inch/Metric Threading, Hardinge Tapered Spindle Nose, 230 Volts

VERTICAL BAND SAW

(New 1977) Do-ALL #2012-1AC , 20" Vertical Band Saw, S/N 340-77293, 24" x 30.5" Pneumatic Feed Work Table, 50-5,200 F.P.M., Butt Welder

HORIZONTAL BAND SAW

W.F. WELLS #W-9, 9"x 18" Cap. Twin Post Horizontal Band Saw



OKAMOTO 12"X 24" HYD. GRINDER



HARDINGE #HLV-H-EM TOOLROOM LATHE

New 1978

TOOL & CUTTER GRINDERS • TOOLING • ACCESSORIES



BROWN & SHARPE SURFACE GRINDER



FARRELL-SELLERS # 6-GA DRILL GRINDER



BOYAR-SHULTZ SURFACE GRINDER



K.O. LEE # BA-960-BB TOOL & CUTTER GRINDER

REAL ESTATE FOR SALE

INDUSTRIAL REAL ESTATE
AVAILABLE FOR LEASE OR SALE
35,000 SF MASONRY BUILDING. TEMPERATURE
CONTROLLED. HEAVY POWER. 3-LOADING DOCKS.
CENTRALLY LOCATED. CALL MARY STEEVES FOR FURTHER
INFORMATION: (585) 381-1710

GRINDERS

SENECA FALLS MACHINE COMPANY (ROYAL OAK) #
25-RO Form Relief Grinder, S/N 25RO-1294 (New
1988), #R-O DC Form Relieving Fixture, Center
Holding Fixture, Optical Comparator, High Speed
Grinding Attachment, Collets, Cams

(New 1987) CINCINNATI Milacron #MT Monoset
Cutter & Tool Grinder, S/N 4898A0187-0060, W/
Tooling

(2) #SP2500 DAREX # SP-2500 Ultra Precision Drill
Grinders

MOORE #3 Jig Grinder, S/N G-616, W/
Heidenhain DRO

(New 1980) OKAMOTO 12" x 24" # Accugar-124N
Hydraulic Surface Grinder, S/N 6032, 12"
Diameter x 1.5 Wide Grinding Wheel,
Automatic Incremental Down Feed in Plunge
& Surface Grinding Modes, O.S. Walker
Electromagnetic Chuck & Control

REID "Rollerway" 6" x 18" Hand Feed Surface
Grinder, S/N 20353 (New 1975), Roller Bearing
Longitudinal Table Travel, Magnetic Chuck

BROWN & SHARPE 6" x 12" Micro-master Hand Feed
Surface Grinder, S/N 523-612-208, Roller Bearing
Longitudinal Table Travel, Magnetic Chuck

MYFORD #MG12 5" x 12" Hand Feed Plain
Cylindrical Grinder, S/N 91153, 10" Diameter x
1.5" Wide Wheel

BOYAR SCHULTZ # 612 Deluxe Hand Feed Surface
Grinder, S/N 16275,) 6" x 12" Cap., W/
Magnetic Chuck

DECKEL # SO Single Lip Cutter Grinder, S/N SO60-
12272, Collets

MEDINA # B "Swisher Type" End Grinder, Dual 8"
x 15" O.S. Walker & 4" x 8" Permanent
Magnetic Chucks

K.O. LEE #BA-960BB Tool & Cutter Grinder, S/N
15313 EC, 5-1/4" x 27-1/4" Table Working
Surface, Ball Bearing Table Travel

FARRELL # 6-GA SELLERS Drill Grinder
KAR-RY # 3, Precision 1" Belt Grinder

JIG BORER & ACCESSORIES

MOORE # 3 Jig Borer, S/N B-1439, Newall DRO
MOORE "Ultra-Precise" 10-7/8"

Horizontal/Vertical Rotary Table, S/N LRT-1211

MOORE "Micro-Sine" 12" x 14" Precision Sine
Plate W/Setting Standards

Moore Toolmakers Mahogany Cabinet

LARGE ASSORTMENT OF VIDMAR TOOL CABINETS



FAMCO # 1252, 52" X 12G. POWER SHEAR



Several Available

GORBEL OVERHEAD CRANE SYSTEMS



Approx. 40 Available

STANLEY VIDMAR & LISTA TOOL CABINETS



STANLEY VIDMAR & LISTA TOOL CABINETS



VIDMAR WOOD TOP WORK BENCH



STANLEY VIDMAR & LISTA TOOL CABINETS



Very Late

XYBEX #1000 COOLANT FILTRATION SYSTEM



ADVANCE FLOOR SWEEPER



GENIE ELECTRIC MAN LIFT

HONE

SUNNEN #MBB-1600 Horizontal Hone, S/N 43446, 115Volt

DRILLS

FOSDICK 24" Drill Press, S/N 21311

POWERMATIC #1150, 15" Variable Speed Bench Drill, S/N 67V1617

(2) 15" CRAFTSMAN Drill Presses

TAPPING MACHINES

SQUARE TAP Articulating Arm Pneumatic Tapping Machine

S & L MACHINERY Articulating Arm Pneumatic Tapping Machine

LASSY Hand Tapping Machine

SHEAR

FAMCO #1252, 52" x 12 Gauge Mechanical Power Shear, S/N S-K67WY43 (New 1967), 24" Capacity Rear Operated Manual Back Gauge, Remote Electric Foot Pedal

WELDERS

ESAB Migmaster 250 Mig Welder
Lincoln AC/DC Gasoline Generator Arc Welder, S/N A-955354, AC-225 Amp / DC 210/6 Amp

PRESSES

HAEGER #HP25A Insertion Press, S/N 063, Bench Top
OTC 25 Ton H-Frame Hydraulic Press

LARGE ASSORTMENT OF GORBEL CRANE SYSTEMS



GORBEL OVERHEAD CRANE SYSTEMS



GORBEL OVERHEAD CRANE SYSTEMS



TORIT DUST COLLECTION SYSTEM



OKK # MH-5J "BED TYPE" H.D. MILLER



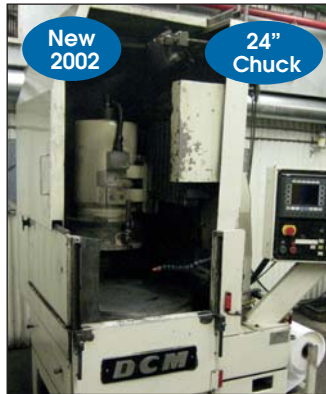
BLANCHARD #11-16 ROTARY SURFACE GRINDER



POWERMATIC DRILL PRESS



FLAMMABLE LIQUID STORAGE CABINET



DCM TECH # IG-280-SD ROTARY SURFACE GRINDER



ULTRAMATIC VIBRATORY FINISHER

VIBRATORY FINISHERS/BLAST CLEANING/PARTS WASHER/PARTS CLEANER

SWECO #FMD-7LR, 7 Cubic Foot Cap. Vibratory Finishing Mill, S/N 7FM-884-15 (New 1984), 44" Inside Chamber Diameter, 46-3/4" Inside Chamber Height, 2,100 Lb. Maximum Chamber Load, Lever Operated Swing Blade/Parts Separator

ULTRAMATIC Burr 3 Three Cubic Foot Capacity Rectangular Vibratory Finishing Mill, S/N 8846, 15-1/2" x 28-1/2" Tub Opening

ECONOLINE Blast Cabinet, 24" F-B x 36" L-R x 12" High Chamber, Dust Collector

TRINCO # 30 Blast Cabinet S/N 704

GRAYMILLS #FL48-3000J Parts Washing Machine, S.N 3953, Allen Bradley Microview PLC

CAE CLEANING TECHNOLOGIES (RANSHOFF) "Lean Jet" Parts Cleaning Machine, Allen Bradley Panel View PLC

VIBRATORY FINISHERS • PARTS WASHERS • PLANT SUPPORT



Several Available

STARRETT PINK GRANITE PLATE



Auto-Unload

SWECO # FMD-7LR VIBRATORY FINISHER



New 2006

RANSHOFF-CAE "LEAN JET" PARTS WASHER



DO-ALL VERTICAL BANDSAW



MEDINA # B "SWISHER TYPE" END GRINDER



SUNNEN # MBB-1600 HONING MACHINE



ESAB WELDER



LINCOLN PORTABLE GAS POWERED WELDER



ELECTRO-ARC TAP DISINTEGRATOR

MISCELLANEOUS

XYBEX System 1000 Coolant Filtration System with Pha Sep Phase Separation System, Approximately 300 Gallon Dirty Coolant, 450 Gallon Clean

GENIE # IWP-25S Portable Electric Man Lift, S/N 4096-244, 350 Lb. Maximum Load, 25' Maximum Platform Height, Charger

TORIT # 124 Dual Cabinet Dust Collection System, S/N C535, 2,900 C.F.M. Rating Per Unit, Dual 7.5 H.P. Motors, Fabric Filters, Pull-Out Drawers

(3) PRO-PEN CORP. # P-3000 Micro-Percussion (Dot Peen) Pneumatic Marking Machines, S/N 02-11-03978

ELECTRO ARC Tap Disintegrator, Model: "Rebuild", S/N 8333 (New 1987), 18" x 26" T-Slotted Work Table, Auto Feed

(40) STANLEY VIDMAR and LISTA H.D. Tooling Cabinets W/ Drawer Dividers

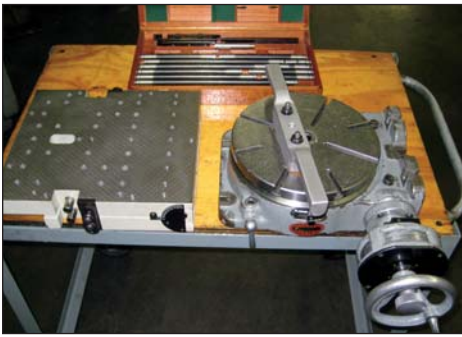
FLOOR SWEEPERS

MINUTEMAN

#MC260026QP Electric Floor Sweeper, S/N XMC260026QP0837, 24 Volt DC, W/ Charger

ADVANCE # 360B-1 Electric Floor Sweeper, S/N 802586, W/ Charger

LARGE QUANTITIES OF TOOLING & ACCESSORIES



MOORE ROTARY TABLE & MICRO-SINE PLATE



LARGE VERNIER



GORBEL OVERHEAD CRANE SYSTEMS



SCAGLIA # L-80C PART MANIPULATOR



VIEW OF CARBIDE & HSS TOOLING



VIEW OF CARBIDE & HSS TOOLING



KENNETMETAL CNC RIGHT ANGLE HEAD



VIEW OF CARBIDE TOOLING CUTTERS



VIDMAR CABINETS



VIDMAR CABINETS



VIDMAR CABINETS & INSPECTION TOOLING



VIDMAR CABINETS WITH FASTENERS

LARGE QUANTITIES OF NEW PERISHABLE TOOLING



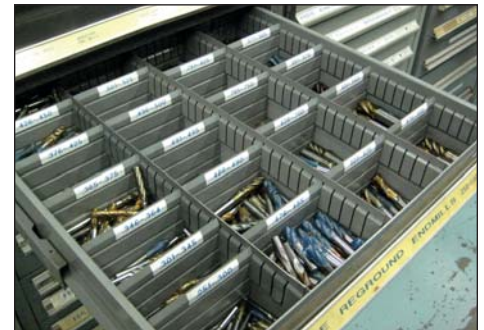
TOOLING INSIDE VIDMAR CABINETS



VIEW OF VIDMAR DRAWERS WITH CUTTERS, ENDMILLS & CARBIDE INSERTS



**FORKLIFTS/
ELECTRIC PALLET JACK**
CLARK # CGC-25 , 5,000# Cap.
 Propane Forklift, Solid Tires,
 Triple Mast, Side Shift
CATERPILLAR # M-50, 5,000#
 Capacity Electric Forklift, S/N
 26N1800
Toyota #5FBE-20 Electric Forklift,
 W/ Triple mast, solid Tires and
 Battery Charger
**AUTOMATIC TRANSPORTATION
 CO. Type E, Electric Pallet
 Jack, S/N WP-42748**



JIB CRANES

**INDEVA 175# Capacity Ceiling Mounted Jib
 Crane on Flexible Arm, Digital Scale**
(3) GORBEL Overhead Jib Crane Systems,
 (2) 150 Lb. Capacity Electric Hoists,
 Approximate 10' Span/35' Runway
(2) GORBEL Overhead Jib Crane Systems,
 (3) 250 Lb. Capacity Air Hoists,
 Approximate 12' Span/75' Runway,
**Overhead Jib Crane System, (3) ARO Air
 Hoists, Approximate 12' Span/30' Runway**
**(3) SCAGLIA #L-80C "Manipulator" type
 Free Standing Jib Cranes, 10' Vertical
 Stroke, Motorized Hoists, Digital Scales**



HUOT DRILL SETS



ECONOLINE BLAST CABINET

LARGE QUANTITY OF BIG KAISER & ISCAR BORING TOOLING



VIEW OF VIDMAR DRAWERS WITH BIG KAISER & ISCAR BORING TOOLS



DUMPING SCRAP HOPPER



TOOLING

LARGE Quantity of Tooling (Many NEW) : (1000) CAT #40 CNC Toolholders, (1000) CAT # 50 CN Toolholders, (300) BT # 35 & 40 CNC Toolholders, Kurt Vises, CHICK Vises, Tomb-Stones, Fixtures Plates and Box Parallels, Tooling, Endmills, Drills, Carbide Endmills, Carbide Inserts, Cutters, Reamers, HSS Endmills, Large Quantity of BIG Kaiser Boring Tooling, ISCAR Boring Tooling , DeVlieg Micro-Bore Tooling, etc.



GRAYMILLS # FL-48-3000J PARTS WASHER



MINUTEMAN FLOOR WASHER

SUPPORT

Wood Top Work Benches, Chairs, Fans, Collets, Rack shelving, 2-Door Cabinets, Office Furniture, Machine Jacks, Scissor Lift, Yardman Snow Blower, Barbecue Grill, Arbor Presses, etc.

VEHICLES

2007 GMC Pickup Truck
2003 Ford Van
Ford Tractor with Front End Bucket Loader

REMOVAL DATE OCTOBER 6TH, 2010 - SEE WEBSITE FOR COMPLETE TERMS

PLANT SUPPORT • MARKING MACHINES • COOLANT RECOVERY



VIEW OF RACK SHELVING



CATERPILLAR ELECTRIC FORKLIFT



OIL RECOVERY SYSTEM



TAPPING ARM



HAEGER # HP-25A INSERTION PRESS



OIL RECOVERY SYSTEM



SMOG HOG MIST COLLECTOR



DAREX DRILL GRINDERS



SCAGLIA # L-80C PART MANIPULATOR



PRO-PEN # P-3000 "DOT-PEEN" MARKING MACHINE



WILKERSON AIR DRYER



PROPANE SAFETY CAGE

FORKLIFTS • MATERIAL HANDLING • PLANT SUPPORT



GORBEL OVERHEAD CRANE SYSTEMS



SERVI-SUMP OIL RECOVERY SYSTEM



PORTABLE ELECTRIC PALLET TRUCK



PORTABLE HYDRAULIC DIE CART



TOYOTA ELECTRIC FORKLIFT



CLARK 5,000 LB. FORKLIFT



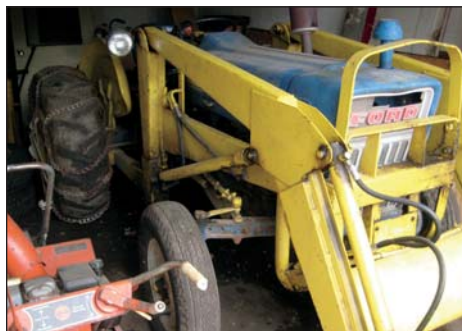
PORTABLE HYDRAULIC DIE CART



CLARK 5,000 LB. FORKLIFT



CLARK 5000 LB. FORKLIFT TRUCK



FORD TRACTOR WITH BUCKET LOADER



CHEVROLET PICK UP TRUCK

LIVE ONSITE & WEBCAST 2 DAY AUCTION OF ROCON MFG.

MAJOR LIVE ONSITE & WEBCAST AUCTION

AUCTION INFORMATION LIVE ONSITE & WEBCAST AUCTION

2-DAYS – OVER 2000 LOTS

COMPLETE CLOSURE OF CNC MACHINE SHOP

Auction Site: 606 Hague Street Rochester, New York 14606

Sale Date: September 21st & 22nd, Starting at 10:30 AM (ET) Each Day

Inspection Date: September 20th, 9 AM TO 4 PM

Buyer's Premium: 12.5% Onsite & 15.5% Webcast

Webcast Bidding



Register at www.bidspotter.com

Onsite Registration

Onsite registration is on the morning of the sale. In order to obtain a bid paddle a \$100.00 refundable fee is due at time of registration.

Disclaimer: Auctioneer is not responsible for errors, omissions, additions or deletions. Items offered may not necessarily be sold as described and/or photographed. Buyers should verify all aspects of their potential purchases during inspection as all items offered will be sold "as is, where is" with all faults. Please check with the auctioneer's office for additions or deletions.

Proxy Bids

If you are unable to participate in this sale Proxy Bids are accepted. Proxy bids may be submitted online directly from the lot catalog or call (203) 458-0709 for a proxy bid form.

**THOMAS INDUSTRIES
APPRAISAL DIVISION**
Accurate appraisals supported by over 56 years of conducting worldwide auctions and liquidations.

 Call (203) 458-0709 for a confidential appraisal of your assets. One piece of equipment or an entire plant.

SALE UNDER MANAGEMENT OF



THOMAS INDUSTRIES (203) 458-0709 Phone
2414 Boston Post Road (203) 458-0727 Fax
Guilford, CT 06437-2310 www.thomasauction.com

SALE IN CONJUNCTION WITH:

SC

Since 1951

STEEVES & COMPANY, INC. SINCE 1951

Industrial Real Estate Available For Lease or Sale

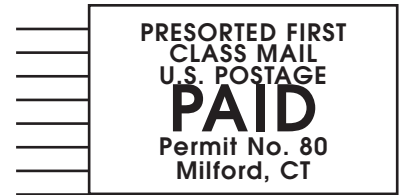
**35,000 SF Masonry Building. Temperature Controlled. Heavy Power. 3-Loading Docks.
Centrally Located. Call Mary Steeves for Further Information: (585) 381-1710**

COMPLETE AUCTION INFORMATION AT WWW.THOMASAUCTION.COM

Under Management of:



THOMAS INDUSTRIES
2414 Boston Post Road
Guilford, CT 06437-2310
(203) 458-0709 • (203) 458-0727 Fax
<http://www.thomasauction.com>



MAJOR LIVE ONSITE & WEBCAST AUCTION

By order of secured creditor

ROCON MANUFACTURING

FORWARDING SERVICE REQUESTED

SALE SITE:

606 Hague Street
Rochester, New York 14606

SALE DATE:

September 21st & 22nd,
Starting at 10:30 AM (ET) Each Day

INSPECTION:

September 20th, 9 AM TO 4 PM

Buyer's Premium: 12.5% Onsite & 15.5% Webcast

LIVE ONSITE & WEBCAST AUCTION LARGE 2-DAY AUCTION • OVER 2000 LOTS



DAEWOO #
DMV-400
"DIAMOND
SERIES"
CNC VMC

Dual
Pallets

New
1998



PC-DMIS

1 of 4

BROWN &
SHARPE #
9-9-8
"GLOBAL"
DCC
CMM

New
2004

AUCTION INFORMATION: WWW.THOMSAUCTION.COM OR 203-458-0709