

MAJOR 2-DAY ONLINE PRINTING AUCTION HUGE PLANT CLOSURE OF 250,000 SQ FT PRINTER

**ROUTER/CUTTERS • DIE CUTTERS • PAPER CUTTERS • DIGITAL PRINTING
SCREEN PRINTING • LAMINATING • MATERIAL HANDLING
MAINTENANCE • AIR COMPRESSORS • PLANT SUPPORT**

By Order of the Secured Creditor
Windsor Marketing Group

100 Marketing Dr, Suffield, CT 06078



Zund G3 Router/Cutter Model G3 3XL-3200



Fuji Films Inca Onset High Volume Flatbed Press



Polar Mohr 69" Paper Cutter Model 176XT



EDL Inline Wrapper Model ILA120-30

SALE DATES: TUES & WEDS, OCTOBER 15 & 16, 1:00 PM (ET)

OPEN HOUSE INSPECTION: MON, TUES & WEDS, OCT 14, 15 & 16, 9 AM TO 4 PM (ET)

Sale under Management of:



**THOMAS INDUSTRIES &
ADVANCED PRINT TECHNOLOGIES**

THE NATIONS LEADING FULL SERVICE PRINTING & GRAPHICS TEAM



WORLDWIDE AUCTION & APPRAISAL SERVICES



ZUND PRECISION ROUTER/CUTTER
MODEL L-3000

New
2008



BRAUSSE PLATEN DIE CUTTER
MODEL PE2M, 79" X 55"

New
2007



TCZ STANDARD PLATEN DIE CUTTER
MODEL 39 X 55



CONSOLIDATED INTERNATIONAL #250
HIGH DIE DIE CUTTER



CLEEN CUT FLAT BED DIE CUTTER
MODEL DC80

New
2008



LAWSON 110" PACEMAKER II PAPER CUTTER
MODEL 110

ROUTER/CUTTER

- Zund G3 Router/Cutter Model G3 3XL-3200,**
S/N 320247, (New 2014 - Installed 2015)
- Zund Precision Router/Cutter Model L-3000,**
S/N L0300291 (New 2008)

DIECUTTERS

- Brausse Platen Die Cutter Model PE2M,**
S/N EP48538, 79" X 55", 15 HP (New 2007)
- Consolidated International High Die Die Cutting Machine Model 250,** S/N 25-89
- TCZ Standard Platen Die Cutter Model 39 X 55,**
S/N P7903-R
- (2) Cleen Cut Flat Bed Die Cutter Model DC80,**
S/N 8530 (New 2008) & 8513 (New 2006)

PAPER CUTTERS - LIFTS - JOGGERS

- Lawson 110" Pacemaker II Paper Cutter Model 110,** S/N BK164
- Polar Mohr 69" Paper Cutter Model 176XT,**
S/N 74A1105 (New 2005)

Polar Mohr 45" Paper Cutter Model 137ED,
S/N 7041207 (New 2000)

(3) Polar Mohr 30" Paper Cutter Model 78X
(New 2004 & 2005)

Polar Mohr 30" Paper Cutter Model 78ED,
S/N 7261505 (New 2002)

Polar Mohr Transomat Model TR130ER-5,
S/N 7093213 (New 2000)

Polar Mohr Jogger Model RA-4, S/N 7082428
(New 2000), Squeeze Roll Jogger W/ Digital Weigh Cell

Polar Mohr Paper Lift Model LW1000-6,
S/N 7072292 (New 2000)

FOLDER

Heidelberg/Stahl Folder Model 1220E-4-P-3,
S/N 120RG0046, 4/4, Pile Feed And Delivery

WIDE FORMAT PRINTERS

(2) Fuji Films Inca Onset S40i High Volume Flatbed Press (New 2013), Wide-Format UV Press, G-Trax Systems, Up to 5,059 Sq Ft./Hour, Parker Hyperchill Chilled Water System

SALE DATES: TUES & WEDS, OCT 15 & 16 1:00 PM (ET)



POLAR MOHR 45" PAPER CUTTER
MODEL 137ED



POLAR MOHR 30" PAPER CUTTER
MODEL 78X



POLAR MOHR TRANSMAT
MODEL TR130ER-5



POLAR MOHR JOGGER
MODEL RA-4



HEIDELBERG/STAHL FOLDER
MODEL 1220E-4-P-3



HEIDELBERG PD-94 SCORING/SLITTING/
PERFORATING MACHINE 2-AXIS

SCORE/PERF/SLIT MACHINES

- Heidelberg** PD-94 Scoring/Slitting/Perforating Machine S/N 1224408687, 2-Axis, Pile Feed, Delivery Conveyor (New 2005)
- Rollem** Scoring Machines Model T.R., S/N TRM799/189

LAMINATORS

- Seal** 2-Sided Laminator Model 62 Pro-D, S/N 64726-00102, 8,050 Watts (New 2015)
- Seal** 2-Sided Laminator Model Image 5500, S/N 500-037

DIGITAL PRINTING

- (2) **HP Scitex** Model Tj8600 S/N 30 & 27 (New 2007)
- (2) **Xeikon** Model X5000/X6000 Digital Press S/N 43195/46277 (New 2004/2008)
- Agfa** Dotrix IPS Modular Web Inkjet Print System S/N 10317846, 25" Web Width, Dual Roll Stands (New 2009)

- (6) **Heidelberg** Digimaster 9110 Digital Print Production Systems
- Roland** Versa Art Re-640 Digital Inkjet UV Printer (New 2015)

ROLL/SHEET CUTTERS

- (2) **Futoba** XLD170 Cutter (New 2014)

SEAM WELDER

- Miller** Weldmaster CS112-SB, S/N 112-0904-1335 (New 2002), 131" Length

COLLATORS

- (2) **Theisen & Bonitz** Collator Model Sprint 20 Pocket & Sprint 310 10 Pocket

PROOFERS

- Epson** Stylus Pro 11880 Proofer, Wide Format
- (3) **Epson** Pro 9900 Ink Jet Printer / Proofer With "Spectroproofer" Option

ROUTERS/CUTTERS - DIE CUTTERS - PAPER CUTTERS



SEAL 2-SIDED LAMINATOR MODEL 62 PRO-D

New
2015



SEAL 2-SIDED LAMINATOR
MODEL IMAGE 5500



HP SCITEX MODEL TJ8600

1 of 2

New
2007



XEIKON MODEL XPS5000 DIGITAL PRESS

1 of 2



AGFA DOTRIX IPS MODULAR
WEB INKJET PRINT

New
2009



ROLAND VERSA ART RE-640
DIGITAL INKJET UV PRINTER

New
2015

TAPING MACHINES

MGL Taping Machine Model MGL43,
S/N 112643UHS, 2 Heads

SCREEN PRINTING MACHINES

Industrial Screen Printing Technologies Silkscreen
Printing Line Model Multigrip-1522/4/UV, 4 Print
Stations

Siasprint Silk Screen Printer Model Serifast-150-180,
S/N 966131 (New 1996), 150 X 180, Sias America
UV Drying

Siasprint Nova Press Silkscreen Printer Model
PS-MATC, S/N 2240191 (New 1991) W/ Vitran UV
Dryer

SCREEN PRINTING - SUPPORT EQUIPMENT

Dane Automatic Screen Cleaner Model DVV-
380HO-180-HPW, S/N 2032-05-12 (New 2012),
Stainless Steel

Dane Automatic Screen Cleaner Model DVV-
38038-220140, S/N 2030-03-01 (New 2001),
Stainless Steel

Diamond-Kutronic Squeegee Sharpener Model
DKTR-176, S/N 9512311

Dane Screen Stencil Processor Model DSP-DP-ML-
1800X2500, S/N 1700-505 (New 2005)

ROUND CORNER MACHINE

Challenge Dual Corner Machine Model DCM,
S/N 1619

BANDING MACHINES

(5) **Wexler** Banding Machine Model ATS-MS-420S

DRILLS

Lawson Super Duty Drill Model A3K,
S/N 202a00k04, 2 Spindles

RIVET/GROMMET MACHINES

(3) **Edward Segal** Automatic Grommeting
Machine Model G2R83

(2) **Edward Seigel** Grommeters Model 83GW,
S/N 5627 & 5737

DIGITAL, WIDE FORMAT & SCREEN PRINTING



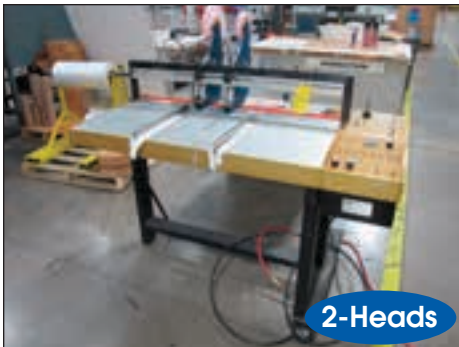
FUTOBA XLD170 CUTTER



MILLER WELDMASTER CS112-SB



THEISEN & BONITZ COLLATOR
MODEL SPRINT 20 POCKET



MGL TAPING MACHINE MODEL MGL43



INDUSTRIAL SCREEN PRINTING
TECHNOLOGIES SILKSCREEN PRINTER
#MULTIGRIP-1522/4/UV



DANE AUTOMATIC SCREEN CLEANER
MODEL DVV-380H0-180-HPW

CASE SEALERS

(2) **Belcor** 252 Case Sealers w/ Belcor #505 Fast Pack Delivery Stacker

BAGGING MACHINES

Autobag Automated Bagging System Model AB-180, With Feed Hopper And Digital Weigh Cell

PACKAGING MACHINES

(2) **EDL** Inline Wrapper Model ILA120-30, S/N 45268 & 45269 (New 2010 - Installed 2015)

Shanklin Automatic Packaging Machine Model TR-1, S/N TR9901, Arpac Heat Shrink Tunnel #Hi-Tech

Shanklin Automatic Packaging Machine Model A27A, S/N A93166, Allen Bradley TCAT Control, Shanklin Shrink Tunnel #T-7XL

Shanklin Automatic Packaging Machine Model A27A, S/N A0317, PLC Control, Shanklin Heat Tunnel #T-7XL

(3) **Arpac** Auto Shrinkwrapper Model 55GI-20C, With Tunnel

(2) **Arpac** Auto Shrinkwrapper With Tunnel Model 105-50 (New 2005)

(3) **Lantech** Rotary Stretch Pallet Wrapper Model Q-300

(2) **Rennco** E-Pac Auto Wrappers Model E-PAC

PADDING MACHINES

Brackett Circular Padding Machine, 6 Station W/ Accordion Type Flexible Conveyor, Hot Glue System

BALERS

Max-Pak Vertical Baler Model MP60ED, S/N 10036338, 15 HP

250K SQ FT PLANT CLOSURE - LATE MODEL/WELL MAINTAINED EQUIPMENT



CHALLENGE DUAL CORNER MACHINE MODEL DCM



WEXLER BANDING MACHINE MODEL ATS-MS-420S



AB TCAT Control

SHANKLIN AUTOMATIC PACKAGING MACHINE MODEL A27A



ARPAC AUTO SHRINKWRAPPER MODEL 55GI-20C



ARPAC AUTO SHRINKWRAPPER WITH TUNNEL MODEL 105-50



BRACKETT CIRCULAR PADDING MACHINE

AIR COMPRESSORS - DRYERS

Ingersoll Rand 50 HP Rotary Screw Air Compressor Model IRN50H-CC, S/N NV3616U09216 (New 2009)

Ingersoll Rand 50 HP Rotary Screw Air Compressor Model SSR, Digital Control

Sullair 50 HP Rotary Screw Air Compressor Model ES-8, Digital Controls

Atlas Copco 10 HP Rotary Screw Air Compressor Model GA7, S/N AII120628, (New 1999)

Dominick Hunter Hyperchill Precision Chilled Water System MODEL PCW260-460/3/60, S/N 3418620001 (New 2007)

HUMIDIFICATION SYSTEM

American Moistening Co. High Volume Humidification System, 3 Digital Zones, Spray Heads Throughout Print Area, FRP 250 Gallon Tank, Filter Tanks, Receiver Tank

PILE TURNER

Topy Maxi Topy Pile Turner/Aerator/Jogger S/N 140112 (New 2006), Pallet Size 47" X 63", 3960 lb Cap

FORKLIFTS - MATERIAL HANDLING

- (2) **Toyota** 5,000 LPG Forklift Model 7FGCU25, Triple Mast, Side Shift, Solid Tire
- Toyota** 3450 lb LPG Forklift Model 7FGCSU20, Solid Tire, Triple Mast, Side Shift, W/ Modern Scale Weigh System
- (2) **Toyota** Electric Stand up Forklift Model 8BRU18 S/N 25434 & 25432 (New 2015)
- (3) **Toyota** 6,000 lb Electric Pallet Jack Model 64BE348X27
- Hyster** 3,000 LPG Forklift Model S30XL, S/N B010B4291G, Solid Tire
- Hyster** 3,000 lb Electric Stand Up Aisle Lift Model N30CR, S/N B138U01720B

FORKLIFTS - MANLIFTS - TRUCKS - VEHICLES - AIR COMPRESSORS



1 of 3

LANE TECH ROTARY STRETCH PALLET WRAPPER MODEL Q-300



4 Available

JLG SCISSOR LIFTS



1 of 2

TOYOTA 5,000 LPG FORKLIFT MODEL 7FGCU25



New 2015

1 of 2

TOYOTA ELECTRIC STAND UP FORKLIFT MODEL 8BRU18



CROWN ELECTRIC AISLE LIFT TRUCK MODEL SP-3450H



1 of 3

TOYOTA 6,000 LB ELECTRIC PALLET JACK MODEL 64BE348X27



1 of 3

New 2006

INTERNATIONAL BOX TRUCK MODEL 4300

Crown Electric Aisle Lift Truck Model SP-3450H, S/N 1A300655

Crown Electric Aisle Lift Truck Model SC4000 S/N 9A140467

Crown Electric Aisle Lift Truck Model 5200, S/N 1A300109, 4500 lb Cap

(6) Bishamon 1100 Lb Walk Behind Lift Model LV50 & LV100W

(2) Willy-Lift Electric Walk Behind Paper Lift Model HL10EL680, 2200 lb Cap
(50+) Hydraulic Pallet Jacks and Paper Lifts

MAN-LIFTS

JLG 60' Boom Lift Model 600A (New 1999)

(4) JLG Scissor Lifts Model 2632, 3246, 2032 & 1930

TRUCKS - VEHICLES - TRAILERS

International 2524 Fire Truck

Vin #CA252KHA15831, (New 1980) Farrar CSYB-1000 Pump System

(3) International Box Truck Model 4300, VIN# 1HTMMAAM86H184257, 1HTMMAAM66H184256, 1HTMMAAM46H184255 (New 2006)

Ford F650 Dump Truck VIN #3FRWF65R75V158413 (New 2005)

Ford F450 Bucket Truck (New 1999)

Ford Pickup Truck Model F-350, Vin# 1FTBF3B62EEA74864 (New 2014)

Ford Pickup Truck Model F-250 (New 2008)

Ford Pickup Truck Model F-250, VIN# 1FTNF21598EB53369 (New 2008)

Ford Pickup Truck Model F-250, VIN #1FTNF21599EA38028 (New 2009)

Ford Pickup Truck Model F-150XLT VIN #1FTMF1CP5GFA41634 (New 2016)

Ford Pickup Truck Model F-150, VIN# 1FTNF1EF80KG15350 (New 2013)

Ford Van Model E-250, VIN# 1FTN524L15HA49510 (New 2005)

INSPECTION: MON, TUES & WEDS OCT 14, 15 & 16 9 AM TO 4 PM (ET)



INTERNATIONAL 2524 FIRE TRUCK



1 of 2

New 2009

FORD PICKUP TRUCK MODEL F-250



New 2007

CHEVY SUBURBAN SUV



GEM ELECTRIC UTILITY VEHICLE MODEL EL,
DIAMOND PLATE UTILITY BODY



New 2009

INGERSOLL RAND 50 HP
ROTARY SCREW
AIR COMPRESSOR
MODEL IRN50H-CC



SULLAIR 50 HP ROTARY SCREW AIR
COMPRESSOR MODEL ES-8



ATLAS COPCO 10 HP
ROTARY SCREW AIR
COMPRESSOR
MODEL GA7



AMERICAN MOISTENING
CO. HIGH VOLUME
HUMIDIFICATION SYSTEM



1 of 2

ISLAND CLEAN AIR
DUSTER 3000

Ford Explorer SUV, VIN# F175K84EGB29254 (New 2014)

Chevy Suburban SUV, VIN# 3GNFK163576228102 (New 2007)

Ford Edge SE VIN #2FMPK4G95GBB69746 (New 2016)

Trailing Trailer VIN #5DYAA17247C002982 (New 2007)

Sund 6-Horse Trailer S/N 13sak272931aqa5706 (New 2003) W/ Changing Quarters

PLANT SUPPORT

Gem Electric Utility Vehicle Model El, Diamond Plate Utility Body

Cleveland Tramrail Bridge Crane System (New 2015) Modular

Parker Nitrogen Generator Model Dual Bed-Db0c-5-R01 W/ Advanced Instruments Digital Control

Brush Chipper VIN #4FMUS1118VR011105 (New 1997)

SALE DATES: TUES & WEDS, OCT 15 & 16 1:00 PM (ET)



CLEVELAND TRAMRAIL
BRIDGE CRANE SYSTEM



MARVEL SERIES 8 MARK II
BAND SAW



ARIENS ST1028 SNOW BLOWER



4
Available

STORM GUARD HD SNOW PLOW



PEDDINGHAUS
IRONWORKER
MODEL 880



MILLER DELTAWELD 451
WELDER



BEVERAGE AIR STAINLESS
REACH IN REFRIGERATOR



1 of 3

JUKI SEWING MACHINE MODELLU-1560N



LARGE ASSORTMENT OF ROLLER
CONVEYORS

Tennant Floor Scrubber Model T16, S/N T16-24640 (New 2014)

Maintenance/Machine Shop: Miller 451 Delta Weld, Miller Syncrowave 350 Welder, Bridgeport Mill, Marvel Series 8 Mark II Band Saw, Peddinghaus Ironworker, Safety Speed Cut H6 Panel Saw, Band Saws, Double End Grinders, Drill Presses, Vises, Power Tools, Hand Tools, Tool Cabinets, etc.

Huge Assortment of Support Equipment: (4) HD Snow Plows, (250) Section Of Heavy Duty Pallet Racking, Pot Devin Glue Pots, Island Clean Air Duster 3000, Beverage Air KR-48-1-AS 2-Door Stainless Reach In Refrigerator, (3) Juki Sewing Machine, Ariens ST1028 Snow Blower, Sheffield HC-530TAB Cutter, (2) 20' Storage Container, 3M Case Sealers, Mosca Strappers, Portable Staircases, Pallet Jacks, Hand Trucks, Fans, Ladders, Storage

LARGE OFFERING OF HIGH-QUALITY OFFICE FURNITURE & EQUIPMENT



VIEW OF PORTABLE METROL TYPE BINDERY CARTS



VIEW OF PALLET JACKS AND PAPER LIFTS



APPLE ALL IN ONE POWER PC



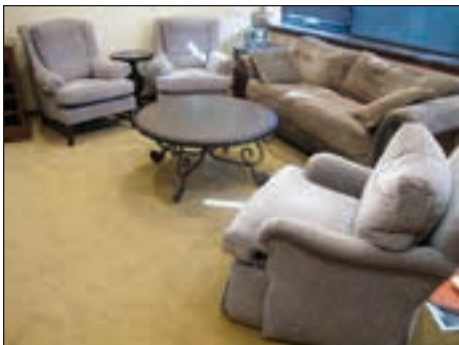
CLUB CAR ELECTRIC GOLF CART



EXECUTIVE OFFICE SUITE



EXECUTIVE OFFICE SUITE



EXECUTIVE OFFICE SUITE



COFFEE/LUNCH KITCHEN



EXECUTIVE CONFERENCE ROOM

Cabinets, Portable Carts, Wire Baskets, Plastic Pallets, etc.

Large High-Quality Office: Executive Suites, Executive Conference Rooms, Customer Lounges, Employee Training Rooms, Coffee/Cafeteria Room, General Office Areas, Fitness Room, Receptionist Areas, etc.



TENANT T16 FLOOR SWEEPER

AUCTION INFORMATION

MAJOR 2-DAY ONLINE PRINTING AUCTION

**ROUTER/CUTTERS • DIECUTTERS • PAPER CUTTERS • DIGITAL PRINTING
SCREEN PRINTING • LAMINATING • MATERIAL HANDLING
MAINTENANCE • AIR COMPRESSORS • PLANT SUPPORT**

BY ORDER OF THE SECURED CREDITOR

Windsor Marketing Group

100 Marketing Drive, Suffield, CT 06078

Sale Dates: Tues & Weds, Oct 15 & 16, 1:00 PM (ET)

Inspection: Mon, Tues & Weds, Oct 14, 15 & 16, 9 AM TO 4 PM (ET)

Buyer's Premium: 15%

Staggered Closing Times: Lots Have 45-Second Staggered Closing Times.

Auto Extend Bidding: If a bid is submitted with less than 3-minutes remaining, the closing time for that lot will be extended by 3-minutes.

Payment Due In Full: Thursday, October 17, 2019

Payment Types: Certified Check or Wire Transfer

As-Is Where-Is: All Items Are Sold "As-Is Where-Is" With No Warranty or Guarantee of Operating Condition. Auctioneer Strongly Recommends That Buyers Inspect Equipment Prior to Bidding.

Removal: Removal begins Thursday, October 17, 2019. Removal hours: 9 AM to 5 PM (M-F). **All items must be removed by Thursday, October 30, 2019 NO EXCEPTIONS.** Any items not removed by this date will be considered abandoned

and bidder will forfeit all right to any items not removed, including all deposit or payment monies.

Removal Costs: Buyers are fully responsible for all cost to remove their purchases. Please get removal quotes prior to bidding and bid accordingly.

Payment Information:

Irina Lehmus irina@thomasauction.com 203 458 0709 x108

Technical Information:

Fred Moss fredtmoss@gmail.com 781 844 1645

Onsite Removal:

Jon Standish Jon@thomasauction.com
203 915 3430

Registration:

Claire Carrano Claire@thomasauction.com
203 458 0709 x100

Considering an Auction or Appraisal

Tomjr@thomasauction.com
203 458 0709 x101

Under Management of:



THOMAS INDUSTRIES
2414 Boston Post Road
Guilford, CT 06437-2310
(203) 458-0709
(203) 458-0727 Fax
www.thomasauction.com

Under Management of:



THOMAS INDUSTRIES
2414 Boston Post Road
Guilford, CT 06437-2310
(203) 458-0709 • (203) 458-0727 Fax
<http://www.thomasauction.com>



MAJOR 2-DAY ONLINE PRINTING AUCTION

By Order of the Secured Creditor
Windsor Marketing Grp.

FORWARDING SERVICE REQUESTED

100 Marketing Drive, Suffield, CT 06078

SALE DATES:
Tues & Weds, Oct 15 & 16,
1:00 PM (ET)

INSPECTION:
Mon, Tues & Weds,
Oct 14, 15 & 16, 9 AM TO 4 PM (ET)

Buyer's Premium: 15%

250K SQ FT PLANT CLOSURE - LATE MODEL / WELL MAINTAINED EQUIPMENT

Windsor Marketing Group

100 Marketing Dr, Suffield, CT 06078

SALE DATES: Tues & Weds, Oct 15 & 16, 1:00 PM (ET)

INSPECTION:
Mon, Tues & Weds, Oct 14, 15 & 16 9 AM TO 4 PM (ET)



w/Arpac Tunnel

Shanklin Automatic Packaging Machine Model TR-1



New 2006

Topyy Maxi Topyy Pile Turner/Aerator/Jogger

Sale under Management of:



THOMAS INDUSTRIES & ADVANCED PRINT TECHNOLOGIES

THE NATIONS LEADING FULL SERVICE PRINTING & GRAPHICS TEAM



WORLDWIDE AUCTION & APPRAISAL SERVICES