

ONLINE AUCTION

**CNC MACHINING CENTERS • CNC LATHES
• EDM MACHINES • MILLING MACHINES • LATHES
• DIE-CASTERS • SAWS • GRINDERS • PLANT SUPPORT**

By Order of:

Edlund Manufacturing Co., Inc.
7406 Taft Park Drive, East Syracuse, New York



New
1998

Haas Vertical Machining Center # VF-3



Like
New

New
2001

HAAS CNC Vertical Machining Center # "Mini-Mill"



New
2004

Hardinge CNC Lathe # Quest GT-27SP



New
2000

Hardinge CNC Lathe # Cobra-42

SALE DATE: THURSDAY, APRIL 26th, 1:00 PM (ET)
INSPECTION: TUESDAY, April 24th, 9 AM TO 4 PM

Sale under Management of:

Thomas Industries, Inc.

2414 Boston Post Road, Guilford, CT 06437-2310

Phone (203) 458-0709 • Fax (203) 458-0727

email: gavel@thomasauction.com

www.thomasauction.com



CNC MACHINING CENTERS & CNC LATHES



New
1998

Haas Vertical Machining Center # VF-3



New
2001

Haas Vertical Machining Center # Mini Mill



New
2004

Gang
Type
Tooling

Hardinge CNC Lathe # Quest GT-27SP



New
2000

Hardinge CNC Vertical Machining Center #VMC-1000-II



Hurco Vertical Machining Center # Spirit 40SLV



New
2000

Hardinge CNC Lathe # Cobra 42

CNC VERTICAL MACHINING CENTERS

- 1998 **Haas** Vertical Machining Center Model VF-3, S/N 14227, Haas CNC Control, 3-Axis, 20 Position ATC, 7500 RPM, 18" x 48" Table, Table Travels X-40", Y-20", Z-25", Rapid Traverse 710 IPM, 20 HP Vector Drive, CAT 40 Taper Chip Auger, Haas Programmable Coolant Nozzle
- 2001 **Haas** Vertical Machining Center Model Mini Mill, S/N 25239, Haas CNC Control, 3-Axis, 10 Position ATC, 6000 RPM, 12" x 36" Table, Table Travels X-16", Y-12", Z-10", Rapid Traverse 600 IPM, 7.5 HP, CAT 40 Taper, Coolant
- 2000 **Hardinge** Vertical Machining Center Model VMC-1000-II, S/N NVC147, Fanuc Series O-MD CNC Control, 3-Axis, 20 Position ATC, 8000 RPM, 20" x 44" Table, Table Travels X-23.62", Y-20.08", Z-20.08", Rapid Traverse, 1,181 IPM, 17.3 HP, CAT 40 Taper, Chip Conveyor
- Hurco** Vertical Machining Center Model Spirit 40SLV, S/N 9003111A, Hurco Ultramax Dual Screen Control, 3-Axis, 24 Position ATC, 10,000 RPM Spindle, 19.75" x 47.75" Table, Travels X-40", Y-20", Z-25", Rapid Traverse 400 IPM, 15 HP, CAT 40 Taper

CNC LATHES

- 2004 **Hardinge** CNC Lathe Model Quest GT27SP, S/N MG-222, GE Fanuc 21i-TB CNC Control, 2-Axis, Interchangeable Gang Top Plate Tooling, 1.062" Spindle Capacity, Max Swing Over Way Cover 11.760", Travel X/Z 11.968"/11.062" Rapid Traverse X/Z 708IPM/945 IPM, 5000 RPM, 5 HP, 3-Jaw Power Hold Chuck
- 2000 **Hardinge** CNC Lathe Model Cobra 42, S/N C-1194, Ge Fanuc 21i-TCNC Control, 2-Axis, 10 Position Turret, 1.625 Bar Capacity, Max Swing 21", Max Turning Length 14", Travel X/Z 7.75"/14", Rapid Traverse X/Z 400 IPM/630 IPM, 5000 RPM, 7.5 HP, 3-Jaw Power Hold Chuck
- Hardinge** CNC Lathe Model Conquest 42, S/N SG678, GE Fanuc Series 18-T CNC Control, 2-Axis, 10 Position Turret, 1.625 Bar Capacity, Max Swing 19.5", Max Turning Length 13.63", Travels X/Z 5.45"/13.65", Rapid Traverse X/Z 472 IPM/630 IPM, 5000 RPM, 10 HP, Parts Catcher, Tailstock, 3-Jaw Power Hold Chuck
- Hardinge** CNC Lathe Model Conquest CS-GT, S/N GT-228, GE Fanuc Series O-T CNC Control, 2-Axis, Gang Tooling Top Plate, 1.062" Spindle Capacity, Max Swing Over Way Cover 11.760", Travels X/Z 11.968"/11.062", 5000 RPM, 5 HP, 3-Jaw Northfield Precision Chuck
- Haas** CNC Rotary Table Model #RT-310, 310mm/12.2" Face Plate, S/N 200332

EDM MACHINES

- 1993 **Charmilles** Sinker Type EDM Model Roboform 40, S/N 600023, Charmilles Roboform 40 Power Supply, S/N 2-5209, 4-Axis, X & Y Are Table Movements, Z Vertical Movement of Electrode, C Rotational Movement of Electrode, Table Size 700 x 500mm, Max Work Piece 370 x 1000 x 700 mm/1000 kg, Travels X-500mm, Y-400mm, Z-450mm, C-360 Degrees, Work Tank 420 x 1040 x 720mm/300l, Advantage Ice Cube Oil Cooler, Fike Fire Suppression System, Renishaw 3R Tool Holder
- 1993 **Hansvedt** Sinker Type EDM Model Leadman, S/N AM13/03, Hansvedt Model 502 H-Pulse Power Supply, S/N AT13707, 50 AMP, Table Size 13.7" x 23.6", Table Travel 10.2" x 13.3", Work Tank 22" x 35.4" x 12"/55 Gallon, Platen to Table 24.5" Max/8.5" Min, Ram Travel 8", Backside Travel 8", Renishaw 3R Tool Holder

VERTICAL TURRET LATHE

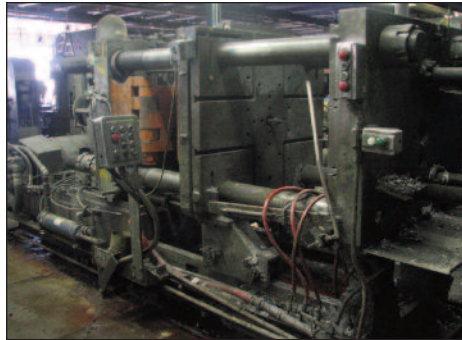
- Bullard 50"** Vertical Turret Lathe, S/N 16253, Spiral Drive, 4-Jaw Chuck, 5 Position Turret, .011 to .50 Feeds

GRINDERS - ROTARY SURFACE

- Blanchard 36"** Rotary Surface Grinder Model 18, S/N 9031, 36" Magnetic Chuck, 39" Swing Inside Guards, Max Height Under New Wheel 12", 18" Segmented Grinding Wheel



View of KUX-Zinc Die Caster



(5) HPM Die Casters



Hardinge CNC Lathe # Conquest 42



Hardinge CNC Lathe # Conquest CS-GT



Haas Programmable Rotary Positioning Table # 310



Charmilles Sinker Type EDM # Roboform 40

MILLING MACHINES - VERTICAL

- Bridgeport** Vertical Mill, Variable Speed, 2 HP, S/N BR12/206112, 42" Table, Bridgeport Power Feed, 60-4200 RPM, Quality Measurement 2-Axis DRO, Kurt Vise
- Bridgeport** Vertical Mill, 1 HP, S/N 101797, 8 Spindle Speeds 80-2720 RPM, 42" Table, 4" Riser Block, 220/440
- Bridgeport** Vertical Mill, 1 HP, S/N 46252, 42" Table, 8 Spindle Speeds 80-2780 RPM
- Bridgeport** Vertical Mill, 1 HP, S/N 65847, 42" Table, 8 Spindle Speeds 80-2720 RPM
- Bridgeport** Vertical Mill, 1 HP, S/N 92083, (8) Spindle Speeds, 80-2720 RPM, 42" Table

LATHES, ENGINE & TOOLROOM

- Hardinge** PRECISION Toolroom Lathe Model TFB, S/N HLV-H-462, 9" Swing, Variable Spindle Speeds 125-3000 RPM, Variable Carriage Feed, Manual Collet Closer, 1 HP
- Hardinge** Chucking Lathe Model HC, HC6992-T, 9" Swing, 3 Speed Machine, Spindle Speeds 125-3000 RPM, Variable Carriage Feed, 8 Position Turret, Hardinge Model AUB Pneumatic Spindle Closer, 1.5 HP
- Hardinge** Second Operation Speed Lathe Model HSL-59, S/N HSL-5C-4723-T, 9" Swing, Cross Slide Table and Lever Operated Cut Off, .5 HP
- Cincinnati** Engine Lathe Model "Tray Top", S/N HT977B, 18" Swing, 72" Centers, Spindle Speeds 25-980 RPM, Threading, 10" 3-Jaw Chuck, 1 3/4 Spindle Hole, 3 HP
- Jet** Gap Bed Engine Lathe Model 2480DGH, S/N 810285H, 24" Swing, 80" Centers, 32" Swing in 7" Gap, (12) Spindle Speeds, 25-1500, English/Metric Threading, 4-Way Tool Block, 12" 3-Jaw Chuck, Tail Stock, Steady Rest, 3" Spindle Hole

GRINDERS - SURFACE

- Brown & Sharpe** Hydraulic Surface Grinder Model 818 Micromaster, S/N 528-8186-8691, Work Width 8", Length 18", Max Work Height 15.5", Max Travel Longitudinal/Cross/Vertical 22"/9"/15.75", Overwheel Dresser, Walker 818 Permanent Magnetic Chuck
- Chevalier** Hand Feed Surface Grinder Model FSG618M, S/N A3878030, Walker 618 Permanent Magnetic Chuck, 2 HP, Direct Drive Spindle
- KO Lee** Hydraulic Surface Grinder Model 5718HA, S/N 8830565, Hydraulic Longitudinal Feed, 618 Walker Permanent Magnetic Chuck, 1 HP Cartridge Spindle
- Boyar Schultz** Hand Feed Surface Grinder Model 612, S/N 13467, 1 HP Belt Drive Spindle

GRINDERS - TOOL & CUTTER

- Gallmeyer & Livingston** Universal Tool & Cutter Grinder Model 4, S/N 4310, 5 1/2" x 42" Swivel Table, Belt Drive, Spindle, No Motor
- KO Lee** Tool & Cutter Grinder Model BA860, S/N 5635, 5" x 24" Swivel Table, 8" Swing Over Table, 1/2 HP Spindle Drive, Weldon Fixture
- KO Lee** Tool & Cutter Grinder Model BA860-1-53, S/N 4805, 5" x 24" Swivel Table, 8" Swing Over Table, 1/2 HP Spindle Drive

GRINDERS - BUFFING

- Hammond Rite** Speed Double End Buffing/Grinding Machine Model 5-C, S/N 3056, 14" Buffing Wheel, 4" Wide Sanding Belt, 36" Between Wheels, (2) Devine Back Stands, 2400 RPM, 5 HP
- Hammond Rite** Speed Double End Buffing/Grinding Machine Model 20CEH, 14" Buffing Wheel, 4" Sanding Belt, (1) Backstand, 2700 RPM, 20 HP

GRINDERS - DRILL

- Sellers** Drill Grinder Model 46, S/N 02-3218, 1 HP

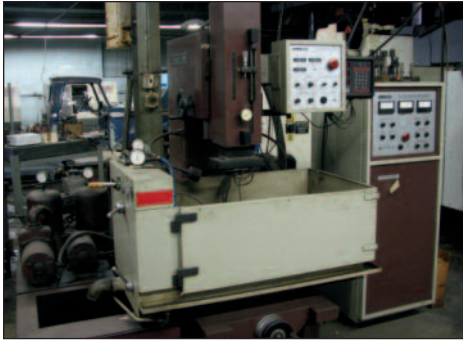
SAWS - HORIZONTAL BAND

- DoAll** Horizontal Hydraulic Band Saw Model C-7, S/N 226-65448, 12" x 12" Capacity, 253" Blade Length, 1" Blade Width, Hydraulic Feed and Clamping

SAWS - VERTICAL BAND

- DoAll** Vertical Band Saw S/N 459710, 120" Saw Band Length, 114" File Band Length, 0-1600 FPM, DoAll ButtWelder, 16" Throat, 24" x 24" Feed Table

FIRST LOT CLOSES: THURSDAY, April 26th, 1:00 PM (ET)



Hansvevt Sinker Type EDM # Leadman



Hardinge Production Lathe # TFB



Jet Gap Bed Engine Lathe Model 2480DGH

Large Capacity



Blanchard 36" Rotary Surface Grinder # 18

Low Hours



View of Inspection Tooling



View of Die Caster (Up to 600Ton)

DRILL MACHINES

- Edlund** Single Spindle Drill Press 12" Throat, 24" Swing, 18" X 22" Adjustable T-Slot Production Table, Belt Drive, 2 HP
- Edlund** 3-Spindle Production Drill Press 8" Throat, 16" x 40" Adjustable Production Table, 12" Between Spindles, 1 HP Each
- Edlund** Single Spindle Drill Press Model 2F-12, S/N 68353, 12" Throat, 24" Swing, 20" x 24" Adjustable Production Table, 100-2400 RPM, Variable Speed Gear Drive Spindle, 1.5 HP
- Edlund** 4-Spindle Production Drill Press 8" Throat, 16" Swing, 16" x 52" Adjustable Production Table, Belt Drive, 12" Between Spindles
- Edlund** 4-Spindle Production Drill Press 15" Throat, 30" Swing, 25" x 87" Adjustable Production Table, 12" Between Spindle, 1 HP Each
- Edlund** Single Spindle Drill Press Model 2M715, S/N 705, 15" Throat, 30" Swing, 26" x 38" Adjustable Production Table, 1 HP
- Edlund** 2-Spindle Drill Press, 9" Throat, 18" Swing, 16" x 35" Adjustable Production Table, Belt Drive, 1 HP
- Edlund** Single Spindle Drill Press Model 4B16, S/N 1599, Belt Drive, 16" Throat, 32" Swing, 24" Adjustable Round Production Table, 9" Column, 2 HP
- Natco** High Speed Multiple Drilling & Tapping Machine, Model E5, S/N 895, 14 Spindles, 8 Upper Drive Units, 1 1/2" Vertical Adjustment of Spindles, Table 14" x 18", Drilling Head Area, 7" x 12" Air/Oil Power Feed Table Travel 6", 2 HP
- Monarch** 2-Spindle Production Drill Press Model 2F-12, S/N 73318, 12" Throat, 24" Swing, Variable Direct Gear Drive Spindles, 1 Spindle 150-3600 RPM, 1 Spindle 600-3600 RPM, 1 Spindle w/ Power Feed, 22" x 48" Adjustable Production Table, 3 HP Each
- Rockwell** Single Spindle Drill Press Model 15-665, S/N 1560786, 7.5" Throat, 12" x 18" Table, 3/4 HP
- Walker Turner** 2-Spindle Drill Press Model 1216-22, S/N 00013C, 7" Throat, 12" x 24" Production Table, 1/2 HP Each
- Walker Turner** Single Spindle Drill Press, 7 1/2" Throat, 15" Swing, 10" x 16" Table, 1/2 HP

JIG BORERS

- Atlantic** Jig Borer Model 4000, S/N 4000-240-64, 12" x 18" Table, 16" Long Travel, 9" Cross Travel, 1 1/2 HP Vari Drive Spindle
- Moore** Jig Borer Model 1 1/2B, S/N J-739, 10.5" x 19.5" Table, 14" Long Travel, 9" Cross Travel, 1 HP

DIE CAST MACHINES

- HPM** Aluminum Die Cast Machine Model D-600, 600 Ton Clamping Force, 50" x 50" Mounting Plate, Tie Bar Diameter 6", Rod Diameter 3", 30 HP
- HPM** Aluminum Die Cast Machine Model D-600A, S/N 68-149, 600 Ton Clamping Force, 46" x 46" Mounting Plate, Cylinder Diameter 6 1/2", Rod Diameter 3", Stroke 5", 25 HP
- Castmaster/HPM** Aluminum die Cast machine Model B-30A, S/N 6BCM3, 400 Ton Clamping Force, 48 1/2" x 41" Mounting Plate, 5" Cylinder Diameter, 20 HP
- HPM** Aluminum Die Cast Machine Model D-400, 400 Ton Clamping Force, 39" x 43" Mounting Plate, Cylinder Diameter 4.25", Rod Diameter 2.5", Stroke 14.5" - 18.5", 40 HP
- Kux Zinc** Die Cast Machine 200 Ton Clamping Force, 23" x 28" Mounting Plate, 7.5 HP
- HPM** Aluminum Die Cast Machine Model D-400-A, S/N 89068-72164, Remanufactured 5/89, Cylinder Diameter 5", Rod Diameter 2.5", Stroke 13.87", 39" x 43" Mounting Plate, 40 HP
- 1998 **Rimrock Multiflink** Die Cast Laddle Model 305, S/N MLL2072C8803, Programmable Strokes 40", 65 Lb Payload, Touch Screen Control Module

MELTING POT FURNACES

- (4) **North American** Gas Fired Melting "Pot" Furnace, Approximately 700 Lb Capacity
- MP4** Gas Fired Melting (Pot) Furnace, S/N 8668-86, Approximately 700 Lb Capacity

VIBRATORY FINISHING EQUIPMENT

Sweco Batch Type Vibratory Mill Model FMP-20HA, S/N 20FM-669-11, 20 Cubic Foot Capacity, 6,000 Lb Capacity, 1,200 RPM, Discharge Chute, 10 HP Control Panel

Sweco Batch Type Vibratory Mill Model FM-3HA, S/N 3FM-66631, 3 Cubic Foot Capacity, 900 Lb Load Capacity, 1.25 HP

Sweco Batch Type Vibratory Mill Model M18L, S/N 18M-169-21, 2.6 Gallon Capacity, Production Discharge and Valve, Metal Cover, 1/4 HP

Wheelabrator Batch Type Tumble Blast Model 27X36, S/N 68882

DUST COLLECTORS

(4) **Donaldson** Torit Dust Collector Models: 60, 64 & 75

(2) **Dust Kop** Dust Collector Models: 2030 & 800

AAF Rotoclone Dust Collector Model D

OCE Dust Collector Model UMA252G5AD, S/N 86-1388, Unimaster FE Control, 3 KW

PRESSES

(2) **Denison** 8-Ton Strain Rod Trim Press Model Spec-CPS & Model CP8C04

Denison 6-Ton Multipress Model M6CO1A59,

(4) **Denison** 6-Ton Hydraulic Trim Presses Model 2C61

Parker Hannifin 28-Ton Hydraulic Press Model OGF-28

(2) **Parker Hannifin** 10-Ton Hydraulic Press Model F-101-22MX

INSPECTION

Starret Hansford Rapid Check Coordinate Measuring Machine Model RCS524018, **Trimos** Height Stand Model 600; 1995 **OPG** Optical Comparator Model TB-14; Federal Gages; **Fowler Trimos** V600C Height Gage; **Rockwell** Model 3R Hardness Tester; **Starret** Grade A Pink Surface Plate, 48" x 78" x 16", (10+) Granite Surface Plates; Micrometers; Block Gages, Dial Indicators, Vernier Calipers, Precision Blocks, etc.

AIR COMPRESSORS DRYERS

1998 **Gardner Denver** Electra Screw Air Compressor Model EBE99K26, S/N S036322, 30 HP, 125 Max Operating Pressure

Gardner Denver Electra Screw Air Compressor Model EBERFF, S/N U57502, 25 HP, 125 Max Operating Pressure

Joy Twistair Tank Mounted Air Compressor Model TA025BA121TG, S/N 212169, 125 Max Operating Pressure, 25 HP

PLANT SUPPORT

Clark 4500 lb. LPG Forklift Model C500-45;

Engleberg Belt Grinder Model 648; **Davis** Keyseater Model

4Kalamazoo 6" Belt Sander/Grinder; **K&E** Flexshaft Grinder; **Lincoln** Square Wave AC/DC Tig Welder Model 275;

Empire Shot Blast Cabinet Model MH2636S; **Baron Blakeslee** Imersion

Degreaser Model HL-600 - 39" x 30" x 29"; **Marvel**

U.S. Hack Saw Model 9A; (2) **Interlake** Silver Stitcher Wire Stitchers; Pedestal Grinders; Drill Presses; Work Benches; Metal Shelving; Storage Cabinets; Large Selection of Vidmar Cabinets, Portable A-Frame Gantry, Electric Chain Hoists, etc.



Bullard 50" Vertical Turret Lathe



Chevalier Hand Feed Surface Grinder # FSG618M



Wheelabrator Tumbler Type Finishing Machine



OGP 14" Optical Comparator # Top Bench



Trimos Height Gage # 600



View of Vidmar Tool Cabinets



Under Management of:



THOMAS INDUSTRIES
2414 Boston Post Road
Guilford, CT 06437-2310
(203) 458-0709 • (203) 458-0727 Fax
<http://www.thomasauction.com>



PRESORTED FIRST CLASS MAIL
U.S. POSTAGE
PAID
Permit No. 80
Milford, CT

ONLINE AUCTION

- CNC MACHINING CENTERS • CNC LATHES
- EDM MACHINES • MILLING MACHINES • LATHES
- DIE-CASTERS • SAWS • GRINDERS • PLANT SUPPORT

FORWARDING SERVICE REQUESTED

By Order of

Edlund Manufacturing Co., Inc.

7406 Taft Park Drive, East Syracuse, New York

SALE DATE:

THURSDAY, April 26th, 1:00 PM (ET)

INSPECTION:

TUESDAY, April 24th, 9 AM TO 4 PM

**COMPLETE LOT CATALOG & PHOTOS
AT WWW.THOMASAUCTION.COM**

- CNC MACHINING CENTERS • CNC LATHES • EDM MACHINES
- MILLING MACHINES • LATHES • SAWS • GRINDERS • PLANT SUPPORT



Charmillis Sinker Type EDM Model Roboform 40



View of Inspection Toolingback

ONLINE AUCTION COMPLETE PLANT CLOSURE

By Order of

Edlund Manufacturing Co., Inc.

7406 Taft Park Drive,
East Syracuse, New York

SALE DATE:

THURSDAY, April 26th, 1:00 PM (ET)

INSPECTION DATE:

TUESDAY, April 24th (9-4)

First Lot Closes:

Thursday, April 26th, 1:00 PM (ET)

Staggered Closing Times: Lots Have 60-Second Staggered Closing Times.

Auto Extend Bidding: If a bid is submitted with less than 3-minutes remaining, the closing time for that lot will be extended by 3-minutes.

Payment Due In Full:

Friday, April 27th, 2012

Payment Types: Certified Check or Wire Transfer

Removal: Final date for removal Friday, May 4, 2012

Buyer's Premium: 15%

TECHNICAL INFORMATION

Tom DeCosmo (413) 478-0030

PAYMENT INFORMATION

Irina Lekhmus (203) 458-0709 X108

ONSITE INFORMATION

Jon Standish (203) 915-3430