

(2) ONLINE AUCTIONS METAL FABRICATING EQUIPMENT

**PRESS BRAKES • BORING MILLS • PUNCH PRESSES
• SHEARS • WELDING EQUIPMENT • BENDING ROLLS
• CNC MACHINES • FORKLIFTS • TRUCKS**

AUCTION #1 By Order of Metal Masters

111 Kendall Street, New Haven, CT 06512

Auction Date: Wednesday, November 19th, 1:00 PM (ET)

Inspection: Tuesday, November 18th, 9 AM to 4 PM



10'x 1/4" Cap.

Press & Shear Machinery Hydro Shear



Late Model

Eagle # CP-40 Hyd. Angle Bender



6' x 3/8" Cap.

Webb #R-3LR Initial Pinch Plate Bending Roll

AUCTION #2 By Order of BMCO Industries, Inc.

159 Francis Avenue, Cranston, RI

Auction Date: Thursday, November 20th, 1:00 PM (ET)

Inspection: Wednesday, November 19th, 9 AM to 4 PM



12'x 1 1/4" Cap.

Pacific # 1000-R Hydraulic Shear



New
1983

12' x 200 Ton Cap.

LVD Hydraulic Press Brake



12' x 150 Ton Cap.

Verson Press Brake



Sale under Management of:
Thomas Industries, Inc.
2414 Boston Post Road, Guilford, CT 06437-2310
Phone (203) 458-0709 • Fax (203) 458-0727
email: gavel@thomasauction.com
www.thomasauction.com





Pacific 14' X 200 Ton Press Brake #K200-14



Pacific 10' x 100 Ton Press Brake #100-10



Aronson Welding Positioner #HD10MTCR

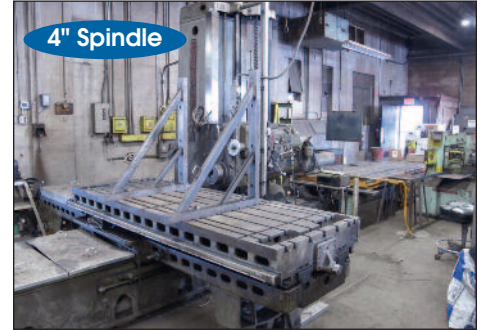
Rare Machine



W.A. Whitney CNC Turret Punch Press, #Pulsa 620



Whitney 50 Ton Duplicating Punch, #653-50



Giddings & Lewis # 340-T Horizontal Boring Mill

4" Spindle



Supermax CNC Turning Center #YCM-TC-2

FANUC Control



Acorn Welding Table

1 of 3



View of Welders

AUCTION #1

PRESS BRAKES

- Pacific** 14' X 200 Ton Hyd. Press Brake # K200-14, S/N 5446 ,14'x 1/4" Cap.
- Pacific** 10' x 100 Ton Hyd. Press Brake # 100-10,S/N 1286
- Chicago Dries & Krump** 6' x 75 Ton Press Brake # 46-C, S/N L-13769

SHEARS

- Press & Shear Machinery Co.**10' x 1/4" Hydro Shear S/N 1014XBHA67576, FOBG
- Niagara** 8' x 1/4" Power Squaring Shear, No. 896

BORING MILLS

- Giddings & Lewis** 4" Horizontal Boring Mill, # 340-T, S/N 7372, W/ 96" Table, Sony 2-Axis DRO

WELDING POSITIONER

- Aronson** Welding Positioner # HD10MTCR

PUNCH PRESSES

- Whitney** 50 Ton Duplicating Punch, # 653-50, S/N 653-185-30080, Manual, Tooling
- W.A. Whitney** CNC Turret Punch Press, # Pulsa 620, S/N P25284; 620-001-37798 (1984), 20-Station, Westinghouse Producer CNC Controls, 1/4" Capacity

BENDING ROLLS

- Eagle** #CP-40 Angle Roll Bender, S/N 396, w/ Tooling Available
- Webb**# R3LR-8006 Initial Pinch 6'x 3/8" Cap., S/N 7267 w/Air Drop End
- Lown** Drop End Power Roll # B300
- Peck Stow & Wilcox** 42" Drop End Power Roll # 417-E, S/N 9439, 15-18 Ga. 5' X 4 1/2" Pinch Drop End Rolls, 3/16" Capacity
- 36" 3-Roll Pinch Rolls

BORING MILLS

- Giddings & Lewis** 4" Horizontal Boring Mill, # 340-T, S/N 7372, 96" Table, Sony 2-Axis DRO

CNC - TURNING & MACHINING

- Supermax** CNC Slant Bed Turning Center # YCM-TC-2, S/N 907088, 19" Swing, 8" Chuck, 8-Station Turret, Fanuc O-T Control
- Sharnoa** CNC Vertical Machining Center # SDC 30-7.5, S/N 850196, W/ 40 X 20" Table, ATC, Tiger 4 CNC Control

RADIAL ARM DRILL

- American Hole Wizard** Radial Arm Drill, 11" Column x 3' Arm

WELDERS

- (4) **Miller** Welders - #: CP-300 & Millermatic 35; (4) **Hobart** Welders - #: Cyber-Tig CT300, PC256 & PC250; (3) **Lincoln** Welders - #: R3-4-400 and VI-400
- Falstrom** Spot Welder # FPS-100L-24, S/N 684-3272, 100 KVA

CUTTING SYSTEMS

- L-Tec** Plasma Cutter # PCM-321
- NCG Cut-O-Matic** O/A Cutting System w/ Table & 4' Rails



Chicago Dries & Krump 6' x 75 Ton Press Brake



American Hole Wizard Radial Arm Drill, 11' x 3' Arm



Bridgeport 1 HP Vertical Mill



Uni-Hyro Ironworker #50-15



Do-All Vertical Band Saw, #V-36



International S1700 Stake Body Truck



Hyster 5000 lb. LPG Forklift #H50J

SAWS

Do-All Vertical Band Saw, # V-36, 36" Throat, w/Weld & Grind Attachment
Kysor Johnson Horizontal Band Saw # J, S/N 24539

IRONWORKERS

Uni-Hyro Ironworker # 50-15, S/N 3PE1413, 50 Ton
Campbell Nibbling Machine # 2524

LATHES

Cincinnati Toolroom Lathe, S/N H7876A, 15" Swing x 30" CC, Pan Bed, 3-Jaw Chuck, Toolpost, Tailstock

MILLING MACHINES

(3) **Bridgeport** 1 HP Vertical Milling Machines, Power Feed, 48" Table

SURFACE GRINDERS

Boyar Schultz Challenger Surface Grinder S/N C-925, 6" X 18" Permanent Magnetic Chuck

BRIDGE CRANES

Twin City 2-Ton Overhead Bridge Crane, 50' Span, w/ 1-Ton Pendant Controlled Hoist
Twin City 1-Ton Overhead Bridge Crane, 20' Span, w/ 1-Ton Pendant Controlled Hoist

FORKLIFTS

Hyster 5000 lb. LPG Forklift # H50J, S/N F003D03112E, Pneumatic Tires, Triple Mast, Side Shifter

INSPECTION TOOLING

Micro Vu 14" Optical Comparator # H14; **FIFE** Hardness Tester # B; **Brown & Sharpe** Micro-Hite Height Gauge, Granite Surface Places, Dial Indicators, Thread Gages, Calipers, etc.

TRUCKS

Ford E350 Box Truck, 15' Box, Automatic
International S1700 Stake Body Truck, Diesel, 20' Rack Body

PLANT SUPPORT

(2) **Linear Bros.** 25 HP Horizontal Tank Air Compressors, (4) **Acorn** Welding Tables, **Leland Gifford** 4-Spindle Drill Press, **Oblique** Metal Tumbling Barrel, **Skat-Blast** Sand Blast Cabinet, **Powermatic** Disc & Belt Sanders, **Craftsman** 10" Table Saw, **Baldor** Double End Grinders, Liquid Storage Cabinets, Work Benches, Vises, Pallet Jacks, Banding Carts, (3) Binks Sprayers, Industrial Vacs, Fans, Hand Tools, O/A Torch Carts, Welding Supplies, Welding Partitions, Desks, Swivel Chairs, File Cabinets, Book Cases, Computers, Printers, Copiers, etc.



NEW HAVEN, CT REAL ESTATE ALSO TO BE OFFERED AT AUCTION CRANSTON, RI

11,920 SQ FT INDUSTRIAL FACILITY, LOCATED ON .32 ACRES, 400 AMP ELECTRICAL SERVICE, FENCED YARD, 16' CEILINGS, BRIDGE CRANES, (3) OVERHEAD DOORS

42,000 SQ FT INDUSTRIAL BUILDING: OFFICES, MANUFACTURING AREA, DRIVE-IN SPRAY BOOTH, NEW 20' OVERHEAD DOORS, BRIDGE CRANES, CEMENT FLOORS, SPRINKLERS, ALARM SYSTEM, ETC.



Complete lot catalog at www.thomasauction.com

AUCTION #1 INSPECTION TUESDAY, NOVEMBER 18TH, 9 AM TO 4 PM



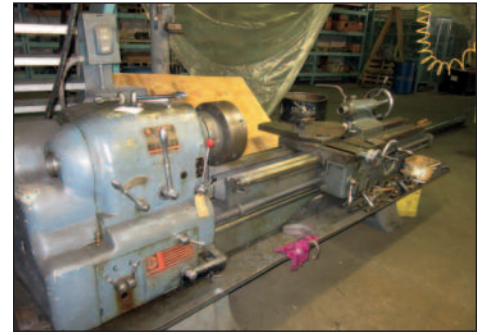
10' x 1/4" Cap.

Late Model

Cincinnati #Century 2H-10 Hydraulic Shear



Amada Coma CNC Turret Punch Press



Clausing Lathe, 17" Swing, 6' Bed

AUCTION #2

SHEARS

Pacific 12' x 1.25" Hydraulic Shear # 1000R
Cincinnati 10' x 1/4" Shear # 2H10, S/N 26038

PRESS BRAKES

LVD 12' x 200 Ton Hydraulic Press Brake # PP240BH13C, S/N 11039 (1983)
Verson 12' x 150 Ton Press Brake # B714, S/N 8163, 3" Stroke, 12" SH
Chicago 10' Press Brake

TURRET PUNCH PRESSES

Amada Coma CNC Turret Punch Press, Fanuc 200 B Control

BENDING ROLLS

24" x 3-Roll Power Bending Rolls

LATHES

Clausing Lathe, 17" Swing, 6' Bed

MILLING MACHINES

Bridgeport 1 HP Vertical Milling Machine, Power Feed, Vise
Enco Vertical Milling Machine, Power Feed, Vise, DRO,

SAWS

OMP Cold Saw # Euromatic 370 (1993), Feed & Take Off Conveyor
Do-All Vertical Band Saw, w/ Grind & Weld
Kalamazoo Cut Off Saw w/Feed Table

IRONWORKERS

Peddinghouse Ironworker # Super 13, S/N 4404658080050

WELDERS & WELDING EQUIPMENT

Lors 50 KVA Spot Welder; **Miller** Shopmaster w/ S21E Wire Feeder; (5) **Airco** CV-450; **Power-Con** Power Drive w/Wire Feed; Welding Manipulators Welding Tables, Clamps, Curtains, Hoods, Regulators, etc.

FORKLIFTS

Hyundai 5000 lb Forklift # HLF-25CII, LPG

TRUCKS

Ford F150 Pickup Truck; **Chrysler** Mini Van; 1995 **Ford** Diesel Box Truck

AIR COMPRESSORS - DRYERS

Curtis Horizontal Tank Air Compressor



Peddinghouse Ironworker #Super 13



New 1993

OMP Cold Saw #Euromatic



Bridgeport 1 HP Vert. Mill. Machine



Enco Vertical Milling Machine



Do-All Vertical Band Saw



Miller Shopmaster Welder



Hyundai 5000 lb Forklift #HLF-25CII

PLANT SUPPORT

(25+) **Power Hand Tools:** Drills, Saws, Routers, etc.

Woodworking Equipment: Vertical Band Saw, Table Saw, Miter Saw, Belt/Disc Sander
Drills: **Fredk Town** AE4 Radial Arm Drill; **Allen** HD 4-Spindle Production Drill Press Table; **Delta** 2-Spindle Production Drill Press; **Rockwell Delta** 20" Pedestal Drill Press

Miscellaneous: Cantilever Inventory Racks w/ Contents; Paint Booth w/Paint Guns; **Genie** Super Lift, (2) Cherry Pickers; Hydraulic H-Frame Press, Strapping Carts, O/A Torches, Portable Carts, Work Benches, Vices, Pallet Racking, Metal Shelving, Parts Bins, Arbor Presses, Tools, Fans, Ladders

QUALITY ITEMS FROM OTHER CT MFG. COMPANIES
FOR LOCATIONS OF ITEMS LISTED ON THIS PAGE (PAGE 5) AND MORE AUCTION
ITEMS SEE THE ONLINE LOT CATALOG PRIOR TO INSPECTION!!!



4-Axis

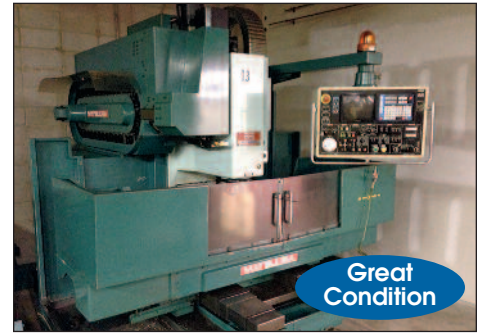
New 2000

Kitamura #HX-500-I CNC HMC



Gas Powered

Clark 15,000 lb. Cap. "All Terrain" Forklift



Great Condition

Matsura # MC-800V CNC VMC



Rebuilt & ReConditioned 2014

New 1999

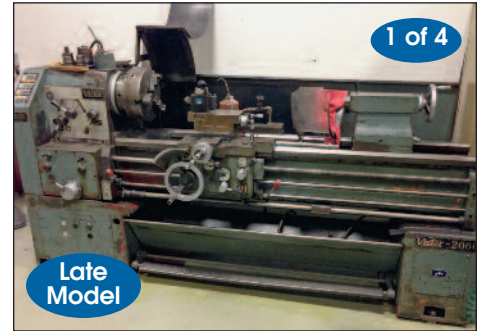
AMADA # Automatic Band Saw



New 2001

1 of 3

Sunnen # FL-3510D Horizontal Hone



1 of 4

Late Model

Victor 20"x 60" Engine Lathe



Great Condition

Matsura # MC-500V CNC VMC



4-Axis

OSP-5000L Control

OKUMA # LC-20 CNC Turning Center



View of New Steel Pipe



Late Model

PROCECO Parts Washer



1 of 3

Great Condition

Fellows Gear Testers



New 2008

Belmont # SY-CNC-2535 "Hole Drilling-Popper" EDM



New 2001

Charmilles # HD-20 CNC "Hole Drilling-Popper" EDM



Caterpillar 5,000 lb.Cap. Forklift



1 of 4

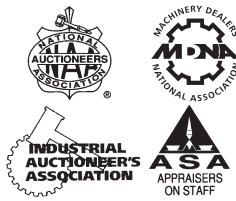
Dennison 8 Ton Hyd. Press

Confirm Final Lot Catalog for Item Locations
www.thomasauction.com

Under Management of:



THOMAS INDUSTRIES
2414 Boston Post Road
Guilford, CT 06437-2310
(203) 458-0709 • (203) 458-0727 Fax
<http://www.thomasauction.com>



PRESORTED FIRST CLASS MAIL
U.S. POSTAGE
PAID
Permit No. 80
Milford, CT

(2) ONLINE AUCTIONS – METAL FABRICATING EQUIPMENT

FORWARDING SERVICE REQUESTED

AUCTION #1

**Metal Masters
New Haven, CT**

Auction Date:

Wednesday, November 19th, 1:00 PM (ET)

AUCTION #2

**BMCO Industries
Cranston, RI**

Auction Date:

Thursday, November 20th, 1:00 PM (ET)

(2) ONLINE AUCTIONS - METAL FABRICATING EQUIPMENT

REAL ESTATE ALSO TO BE OFFERED AT AUCTION

AUCTION #1 METAL MASTERS

111 KENDALL ST. NEW HAVEN, CT

11,920 SQ FT INDUSTRIAL FACILITY , LOCATED ON .32 ACRES, 400 AMP ELECTRICAL SERVICE, FENCED YARD, 16' CEILINGS, BRIDGE CRANES, (3) OVERHEAD DOORS



AUCTION #2 BMCO INDUSTRIES

159 FRANCIS AVE. CRANSTON, RI

42,000 SQ FT INDUSTRIAL BUILDING: OFFICES, MANUFACTURING AREA, DRIVE-IN SPRAY BOOTH, NEW 20' OVERHEAD DOORS, BRIDGE CRANES, CEMENT FLOORS, SPRINKLERS, ALARM SYSTEM, ETC.



AUCTION INFORMATION • WWW.THOMASAUCTION.COM • 203-458-0709