

ONLINE AUCTION

OUTSTANDING OFFERING
CNC MACHINING & TURNING • METAL FAB & STAMPING
MACHINE TOOLS • INSPECTION • SUPPORT EQUIPMENT

**Thomas NE CNC & Machine Tool
Consignment Auction**
(Equipment Locations: CT, MA, RI, NH, FL)
Auction Date: March 12th, 1:00 PM (ET)



DOOSAN # DNM-400A CNC
VERTICAL MACHINING CENTER



DOOSAN # LYNX-220A CNC TURNING CENTER



YCM SUPERMAX # XV-560A CNC
VERTICAL MACHINING CENTER



RAVNE S.S.D.C. 150 TON PRESS



KITAMURA # BRIDGECENTER-8F CNC
"DOUBLE COLUMN" VERTICAL
MACHINING CENTER

Sale under Management of:

Thomas Industries, Inc.

2414 Boston Post Road, Guilford, CT 06437-2310

Phone (203) 458-0709 • Fax (203) 458-0727

email: gavel@thomasauction.com • www.thomasauction.com

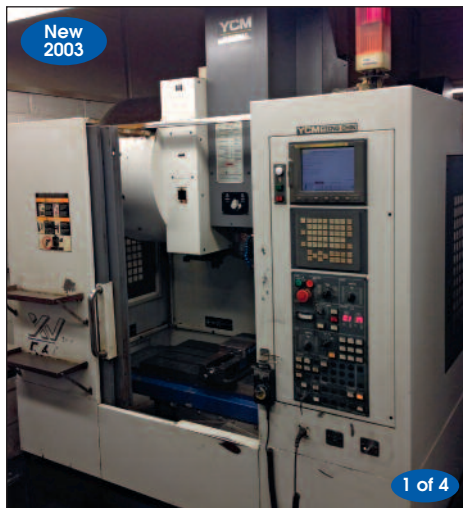


OUTSTANDING OFFERING OF LATE MODEL DOOSAN AND YCM-SUPERMAX CNC MACHINING CENTERS & TURNING CENTERS!!

LOCATION: 54 CLARK STREET, EAST BERLIN, CT
ALL MACHINES IN PLANT UNDER POWER FOR INSPECTION



DOOSAN # DNM-400A CNC VERTICAL MACHINING CENTER



YCM SUPERMAX # XV-560A CNC VERTICAL MACHINING CENTER



DOOSAN # LYNX-220A CNC TURNING CENTER



SMW # RT-160
ROTARY INDEXER
W/ ACU-SMART
CNC CONTROL



INGERSOLL-RAND 15 HP AIR
COMPRESSOR MODEL # UP6-15C-125

(7) VERTICAL CNC MACHINING CENTERS

(New 2010) **Doosan** # DNM-400A CNC Vertical Machining Center w/ Table Size: 36"x 17.1", Travels: 30"-X, 17"-Y, 20"-Z, 15 HP, (20) Pos. ATC, "Big-Plus" Spindle, # CAT-40 Spindle, 8,000 RPM, 1,181 (IPM) on all 3-Axis's, Full Enclosure, Coolant System & FANUC Oi-MD CNC Control, S/N 40A0029, 40A0028, 40A0021 (Located East Berlin, CT.)

(New 2003) **YCM** Supermax # XV-560A CNC Vertical Machining Center w/ Table Size: 27.5"x 16.5", Travels: 22"-X, 16.1"-Y, 17"-Z, 15 HP, (20) Pos. ATC, # CAT-40 Spindle, 8,000 RPM, Full Enclosure, Coolant System & FANUC MXP-100i CNC Control, S/N 310458, 310457, 303400, 211379 (Located East Berlin, CT.)

(2) CNC TURNING CENTERS

(New 2010) **Doosan** # Lynx-220A CNC Turning Center w/ 6.5" 3-Jaw Hyd. Chuck (New), 3-J Collet Nose, Max. Turning Diameter: 12.6", Max. Swing: 20.1", Max. Turning Length: 12.7", Max. Bar Diameter: 1.75", 20 HP, (12) Pos. Turret, Tailstock, Parts Catcher, Part Probe, Coolant System, Turret Tools & FANUC Oi CNC Control, S/N L2204272, L2204271 (Located East Berlin, CT.)

AIR COMPRESSOR

(New 2007) **Ingersoll-Rand** 15 HP "Rotary Screw" Air Compressor w/ Built-In Air Dryer, 120 Gallon Tank & Controls, Model # UP6-15C-125 PSG, S/N UP6095U07162 (Located East Berlin, CT.)

CNC INDEXERS

(New 2010) **SMW** # RT-160 Rotary Indexer w/ Acu-Smart CNC Control (Located East Berlin, CT.)

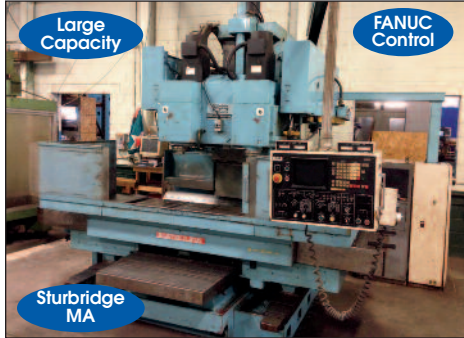
**TURN YOUR SURPLUS
MACHINERY TO \$\$\$**

**Call Now to Consign Items
in our Upcoming June 2015
Consignment**

**Contact: Tom DeCosmo Jr.
Email: tdecosmo@thomasauction.com
Phone: 413-530-0019**

LARGE CAPACITY CNC & FABRICATING MACHINERY

LOCATION: 421 Main Street, Sturbridge, MA 01566



Sturbridge MA
MATSUURA # MC-1500V-DC CNC "TWIN SPINDLE" VERTICAL MACHINING CENTER



Sturbridge MA
KURAKI # KH-50 CNC HORIZONTAL MACHINING CENTER



FANUC Control

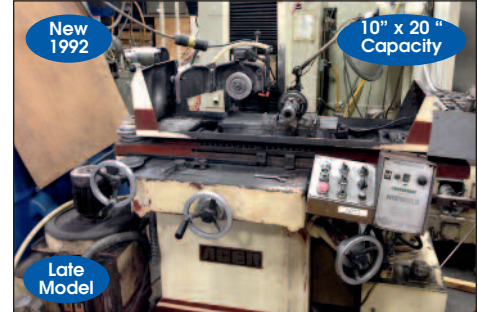
LOCATION: 145 Edgewood Avenue, New Britain, CT 06051 CNC MACHINING - POWER BENDING ROLLS - PRESS BRAKES - SHEAR - SAWS



TOSHIBA # VMC-65 CNC "4-AXIS" VMC & TOSHIBA # VMC-85 (SEE LOT CATALOG FOR PHOTOS & DETAILS)



G&L "EXACTAMATIC-WINSLOW" # HC DRILL GRINDER



ACER # AGS-1020AH HYD. SURFACE GRINDER



EDWARDS # 6.5-3000 "TRUECUT" HYD. POWER SHEAR W/ 10' X 1/4" CAP., F.O.P.B.G



ACCURPRESS # 720012 HYD. PRESS BRAKE W/ 12' X 200 TON CAP

TURN YOUR SURPLUS MACHINERY TO \$\$\$
Call Now to Consign Items in Our Upcoming Consignment Auctions
Contact: Tom DeCosmo Jr.
Email: tdecosmo@thomasauktion.com
Phone: 413-530-0019



AMADA # HA-250 "AUTOMATIC" HORIZONTAL BAND SAW



DO-ALL # C-3300NC "PROGRAMMABLE" HORIZONTAL BAND SAW



ROUND-AB # PS-205 HYD. PLATE BENDING ROLL W/ 6' X 3/8" CAP

MULTIPLE LOCATIONS - SEE ADDRESS INFORMATION - CALL FOR INSPECTION APPT.

33 Spring Lane, Farmington, CT 06032
 - LATE MODEL KITAMURA BRIDGECENTER-8F - MILLING MACHINES - PRODUCTION DRILLS



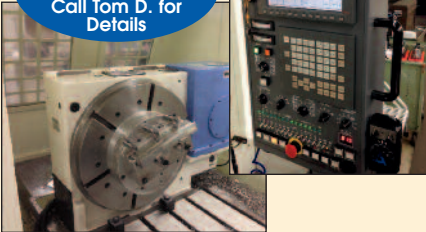
New 2011

4-Axis

Thru-Spindle Coolant

Low Hours

This Machine Available for Immediate Sale. Call Tom D. for Details



HITACHI # 2MP HORIZONTAL MILLING MACHINE



OVERBECK # ZETTO-30 "PRECISION" INTERNAL (I.D.) GRINDER



BRIDGEPORT 1.5 HP "VARIABLE-SPEED" MILLING MACHINE



Taper Attachment

17" X 30" CAP

LEBLOND "REGAL SERVO-SHIFT" ENGINE LATHE



1 of 2

DELTA-ROCKWELL "6-SPINDLE" DRILL PRESS W/ H.D. 24" X 96" BASE & ALBRECHT KEYLESS CHUCKS

(New 2011) Kitamura # BridgeCenter-8F "4-Axis" CNC "Double Column" Vertical Machining Center w/ Table Size: 98.4" x 35.4", Travels: 80"-X, 42.7"-Y, 28"-Z, Distance Table Top to Spindle Nose: 9.92"- 37.87", Distance Between Columns: 45", # CAT-50 Spindle, 20-10,000 RPM, 30 HP (2-Step Gear Drive), 945ipm Rapid in all Axis's, (40) Position ATC, Linear Scale Feedback on all Axis's, Thru-Spindle Coolant (220psi), Full Enclosure, Lift-Up Chip Conveyor, Shower Coolant (overhead wash), Optional Coordinate Rotation (G68 & G69), Optional Chamfering/Corner Rounding, Ridgid Tapping, Kitagawa-Tecnara # TR-500R "4th-Axis" Rotary Table with Tailstock, LOSMA # Darwin-20 Mist-Collector & FANUC 16i-MB CNC Control, S/N 55223

82 Benning Street, West Lebanon, NH 03784



75 Available

PORTABLE WIRE RACK SHELVING UNITS



12 Available

PHOENIX ASSEMBLY BENCHES



1 of 2

PORTABLE SELF DUMPING HOPPERS



STAMPING PRESSES - WATERJET - WIRE EDM - PRESS BRAKE - ROBOTIC WELDER - GRINDER - MILLER

LOCATION: 1702 SE Village Green Dr., Port St Lucie, FL, 34952
WATER JET CUTTING SYSTEM - (14) OBI PRESSES - EDM - PRESS BRAKES



Late Model

OTC-DAIHEN # FUSION ARC-100 ROBOTIC WELDING SYSTEM



New 1985

LVD # 65-JS-08 PRESS BRAKE W/ 10' X 60 TON & AUTOGAUGE G24 CNC BACK GAUGE

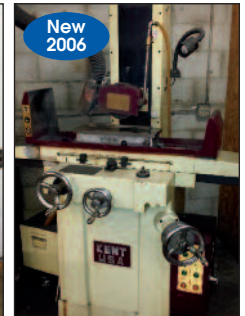


V.O. # 15-ST "HIGH SPEED" OBI PUNCH PRESS



DRO

ALLIANT # RT-2 VERTICAL 2 HP MILLING MACHINE



New 2006

KENT # KGS-618 SURFACE GRINDER W/ 6'X 18" CAP.



AIR Clutch & Brake

100 Ton Cap.

MCKAY-WARCO POWER PRESS # SC2-100-42-72



AIR Clutch & Brake

New 1990's

RAVNE S.S.D.C. 150 TON PRESS



AIR Clutch & Brake

AIDA #PC-15(2) POWER PUNCH PRESS



1 of 2

AIR Clutch & Brake

NIAGARA #M-60 OBI PUNCH PRESS



New 1999

ONA # PRIMA-S-250 CNC "4-AXIS" WIRE EDM



New 2001

60,000 PSI

72"x 144" Capacity

ROMEO "SILVER SERIES" WATER JET CUTTING SYSTEM

Many other presses & complete specifications available in the Lot Catalog Online
WWW.THOMASAUCTION.COM

LOCATION: 337 Berlin Turnpike, Berlin, CT 06037



INGERSOLL-RAND 100 HP AIR COMPRESSOR

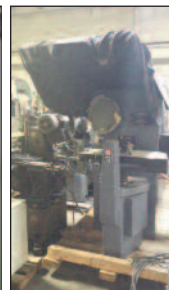


WINSLOW # HC DRILL GRINDER



1 of 2

TSCHUDIN # HTG-52 "3-AXIS" CNC CYLINDRICAL GRINDER



J&L EPIC-114 COMPARATOR



JOY 30 HP AIR COMPRESSOR

*** MOST MACHINERY "IN PLANT UNDER POWER" Please call today to arrange your Inspections!!**

GEAR MACHINERY - WIRE EDM - JIG GRINDER & MORE !!!

**LOCATION: 740 York Avenue
Pawtucket, RI 02861**



M&M PRECISION MODEL # 2025-4-12-12 GEAR ANALYZER



FELLOWS # 20-M "REDLINER" GEAR TESTER



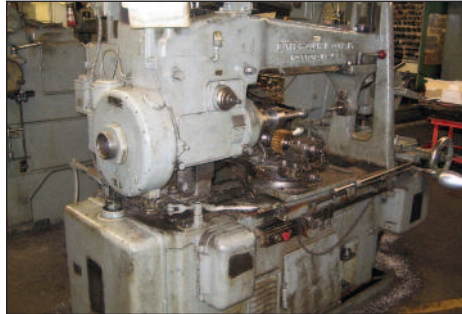
FELLOWS # 8-M "REDLINER" GEAR TESTER

**LOCATION: 60 Rachel Dr.,
Stratford, CT 06615**



NOVATEC #
MDM-50 DRYER
& MDM-
HOPPER-
VACUUM
LOADER W/ 200
LB. CAP

New
1998



BARBER-COLMAN # 16-16 GEAR HOBGING MACHINE

**LOCATION: 50 Altair Ave.,
Plymouth, CT**



New
1992

MITSUBISHI # DWC-90SB "4-AXIS" CNC WIRE EDM MACHINE



DO-ALL # ML 16"
VERTICAL BANDSAW



DRO

MOORE # 3 JIG GRINDER
W/ 11" X 24" TABLE

SPRINGFIELD, MA - MITCHELL PUSH-POINT TUBE FORMING SYSTEM - & LEBLOND LATHE



TUBE FORMING SYSTEM INCLUDING: (1) MITCHELL HYDRAULIC PUSH POINTER S/N PP-589 (NEW 1998), 33,000 LB. 3-DIE TUBE PUSH POINT & (2) MITCHELL HYDRAULIC PUSH POINT DRAWING MACHINES S/N PP-592 & PP-588 (NEW 2001), 60,000 LB. 3-TUBE EXTRUSION MACHINE



New
1998



LEBLOND 26" X 96" "REGAL SERVO SHIFT" ENGINE LATHE



New
2001

1 OF 2

Sale to be conducted ONLINE only

Thomas NE CNC & Machine Tool Consignment Auction

(Equipment Locations: CT, MA, RI, NH, FL)

Auction Date: March 12th, 1:00 PM (ET)

Inspections: By Appointment Only

Online Bidding Only: Register & Bid at
www.thomasauction.com

Buyer's Premium: 15%

Staggered Closing Times: Lots Have 60-Second
Staggered Closing Times.

Auto Extend Bidding: If a bid is submitted with
less than 3-minutes remaining, the closing time
for that lot will be extended by 3-minutes.

Payment Due In Full: Friday, March 13th, 2015

Payment Types: Certified Check or Wire Transfer

As-Is Where-Is: All Items Are Sold "As-Is Where-
Is" With No Warranty or Guarantee of Operating
Condition. Auctioneer Strongly Recommends
That Buyers Inspect Equipment Prior to Bidding.

Removal: All items must be removed by Friday,
March 27, 2015. NO EXCEPTIONS. Removal by
appointment only.

Inspections & TECHNICAL INFORMATION

Tom DeCosmo (413) 478-0030

Tom DeCosmo, Jr. (413) 530-0019

PAYMENT INFORMATION

Irina Lekhmus (203) 458-0709 X108

NOTICE: Some Machine Accessories & Fixtures in
Photos may be SOLD separately. Please Inspect or
View Final Lot Catalog for confirmation.

TURN YOUR SURPLUS MACHINERY TO \$\$\$

Call Now to Consign Items
in our Upcoming June 2015 Consignment
Contact: Tom DeCosmo Jr.

Email: tdcosmo@thomasauction.com Phone: 413-530-0019



connecticut
innovations

What's next starts here.

Equipment Financing for
Connecticut Companies.



For more information contact:
Linda Wieleba
linda.wieleba@ctinnovations.com
860.258.7858
www.ctinnovations.com

THOMAS INDUSTRIES APPRAISAL DIVISION

Accurate appraisals supported by over
56 years of conducting worldwide
auctions and liquidations.



Call (203) 458-0709 for a confidential
appraisal of your assets. One piece of
equipment or an entire plant.



THOMAS INDUSTRIES, INC

2414 BOSTON POST RD.

GUILFORD, CT 06437

(203) 458-0709

GAVEL@THOMASAUCTION.COM

COMPLETE LOT CATALOG & PHOTOS AT WWW.THOMASAUCTION.COM

Under Management of:



THOMAS INDUSTRIES
2414 Boston Post Road
Guilford, CT 06437-2310
(203) 458-0709 • (203) 458-0727 Fax
<http://www.thomasauction.com>



PRESORTED FIRST CLASS MAIL
U.S. POSTAGE
PAID
Permit No. 80
Milford, CT

ONLINE AUCTION

Thomas NE CNC & Machine Tool Consignment Auction

(Equipment Locations: CT, MA, RI, NH, FL)

Auction Date:
March 12th, 1:00 PM (ET)

Inspections:
By Appointment Only

FORWARDING SERVICE REQUESTED

OUTSTANDING OFFERING • CNC MACHINING & TURNING
• METAL FAB & STAMPING • MACHINE TOOLS • INSPECTION • SUPPORT EQUIPMENT

Thomas NE CNC & Machine Tool Consignment Auction

(Equipment Locations: CT, MA, RI, NH, FL)

Auction Date: March 12th, 1:00 PM (ET)

Inspections: By Appointment Only



New
1996

Hydraulic

ROUND-O-AB # PS-205 HYD. PLATE BENDING ROLL
W/ 6' X 3/8" CAP



New
2001

60,000
PSI

72"x 144"
Capacity

ROMEO "SILVER SERIES" WATER JET CUTTING SYSTEM



150
Ton

Late
Model

AIDA #PC-15(2) POWER PUNCH PRESS

AUCTION INFORMATION • WWW.THOMASAUCTION.COM • 203-458-0709