

# MAJOR ONLINE PRINTING AUCTION

COMPLETE CLOSURE OF COMMERCIAL PACKAGING PRINTER

**KOMORI SHEET FED PRESSES • DIGITAL PRINTING  
EQUIPMENT • CONVERTING & PACKAGING  
EQUIPMENT • COMPLETE BINDERY**

By Order of: **Advanced Printing**

1183 Quarry Lane, Pleasanton, CA 94566



**SALE DATE: THURSDAY, MARCH 24, 1:00 PM (ET)**  
**OPEN HOUSE INSPECTION: WEDNESDAY, MARCH 23, 9 AM to 4 PM**

Sale under Management of:

**THOMAS INDUSTRIES &  
ADVANCED PRINT TECHNOLOGIES**

THE NATIONS LEADING FULL SERVICE PRINTING & GRAPHICS TEAM

WORLDWIDE AUCTION & APPRAISAL SERVICES





# LATE MODEL KOMORI PRESSES – CONVERTING & PACKAGING EQUIPMENT – COMPLETE BINDERY



KOMORI PRINTING PRESS MODEL LS640, SERIES 4045



KOMORI PRINTING PRESS MODEL L628/C, SERIES 2845



HP INDIGO 5000 DIGITAL PRINTING PRESS



VUTEK WIDE FORMAT PRINTER MODEL QS2000



FUJIFILM CTP SYSTEM MODEL PT-R8600 LUXEL T-9000

## PRINTING PRESSES - SHEET FED

**Komori** Printing Press Model LS640, Series 4045, S/N 184 (New 2004), 97 Million Impressions, 6 Color + Harris & Bruno Anilox Coater, Acell Ink Dispenser, PDCS-1, Royse (WCV), (3) Harris & Bruno Doctor Chamber, Coating Pump, Doyle Sheet Cleaner. **Available For Prior Sale**

**Komori** Printing Press Model L628/C, Series 2845, S/N 2162 (New 2001), 58 Million Impressions, 6 Color + Std Coater, SAPC, ABW, AIRC, Feeder and Delivery Presets, AWS (WCV) Pierry IR & Spray, Prisco Central

## PRINTING PRESSES - DIGITAL

**HP** Indigo 5000 Digital Printing Press S/N IL-30000871 (New 2007), 30 Million Clicks, Just Normlicht, Multi 5000, Light Booth, Includes: Transformer, Donaldson Chiller, Parts Washer

## WIDE FORMAT PRINTERS

**Vutek** Wide Format Printer Model QS2000, S/N 620273 (New 2008), Roll Option C-M-Y-LC-LM + White



# ONLINE AUCTION - COMPLETE LOT CATALOG & BIDDING AT WWW.THOMASAUCTION.COM



POLAR MOHR PAPER CUTTER MODEL 137 EMC-MON



SABER HIGH SPEED PAPER CUTTER MODEL S-137



GMS HOT MELT GLUE SYSTEM



POLAR MOHR PAPER LIFTER MODEL LW1000



POLAR MOHR JOGGER MODEL RA-4



SHERIDAN SADDLE STITCHER MODEL PROSETTER SP455S



POLAR MOHR TRANSOMAT MODEL TR 2EL-145-3



NORDSON PROBLUE 4 HOT MELT GLUE SYSTEM

## CTP SYSTEMS

**Fujifilm** CTP System Model PT-R8600 Luxel T-9000 (New 2008), 2000 Hours, 64-Diode, (2) KPS (Komori) Punches Installed, Heidelberg Plate Auto Loader, Auto Feeder, (2) Plate Trollies

## SADDLE STITCHERS

**Sheridan** Saddle Stitcher Model Prosetter SP455S, S/N SL247G (Mid/Late 90's Vintage), 6-Pocket, Cover Feeder

## DRILLS

**Challenge** Paper Drill Model MS-10A, SN 64760

**Challenge** Paper Drill Model JF, SN 52846

## PAPER CUTTERS - JOGGERS - LIFTS

**Polar Mohr** Paper Cutter Model 137 EMC-MON, S/N 6041022 (New 1990)

**Polar Mohr** Paper Cutter Model 92-EMC, S/N 5211435 (New 1982)

**Saber** High Speed Paper Cutter Model S-137

**Polar Mohr** Transomat Model TR 2EL-145-3, S/N 6291108 (New 1992)

**Polar Mohr** Paper Lifter Model LW1000, S/N 7272140 (New 2002)

**Polar Mohr** Jogger Model RA-4 (New 2002)

**Challenge** Paper Jogger A SN 3632

**INSPECTION: WEDNESDAY, MARCH 23, 9 AM TO 4 PM (LOCAL TIME)**



# ONLINE INTERNET BIDDING ONLY – REGISTER & BID AT WWW.THOMASAUCTION.COM



GBC SICKINGER PUNCH MODEL USP-13



STAHL FOLDER MODEL TD78/4-B30-RD



MORGANA AUTOCREASER MODEL 33



CHALLENGE PAPER DRILL MODEL MS-10A



SICKINGER PUNCH MODEL HP-17



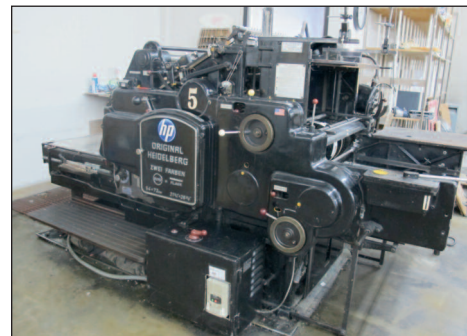
FELINS ULTRA-SONIC 2000-A PAPER BANDER



HEIDELBERG STITCH EXPERT BOOKLET MAKER



COLEX CNC TABLE MODEL FBC5X10



HEIDELBERG CYLINDER DIE CUTTER PRESS MODEL S

## GLUE SYSTEMS

**GMS** Hot Melt Glue System, 4-Channel, (New 2013)

**MicroGlue** Hot Melt Glue System Model 428-34-4, S/N 102609003 (New 2013)

**Nordson** ProBlue 4 Hot Melt Glue System

## AUTOCREASE – MORGANA

**Morgana** Autocreater Model 33, S/N 720167KFAA

## CORNER ROUNDERS

**Lassco** Corner Rounder Model CR-50B, S/N 7179, w/ (4) Dies

**Akiles** Corner Rounder Mode Diamond-5, Electric

## FOLDERS

**Stahl** Folder Model TD78/4-B30-RD, S/N 120143-160, 8 & 16 page sections + stacker

**Stahl** Folder Model S1426B-4-8PG-3, S/N 142MC0041, Pneumatic Gate Fold Attachment w/Controller, Rotocreater Attachment, Many Scorer/Perf/Trim Collars

**Stahl** Folder Model TF 66/444-RF.2, S/N 41858-171010 (New 1995), 8 & 16 Page Attachment and Stacker, Gate Fold Attachment, Roto Crease Attachment

**Stahl** Folder Model B19, S/N 20523, 8 Page + Stacker, Roto Crease



# LATE MODEL KOMORI PRESSES – CONVERTING & PACKAGING EQUIPMENT – COMPLETE BINDERY



AUTOFEEDS LAMINATOR MODEL HTS30, 2-SIDED



SHANKLIN L-SEAL PACKAGING MACHINE MODEL F-5A



PITNEY BOWES PRODUCTION TABBER MODEL



EPSON SURECOLOR T7000 PROOFER



ROSBACK TRUE-LINE MACHINE



EPSON STYLUS PRO 9900 PROOFER



SPARTANICS PAPER COUNTER MODEL EZ-KOUNT 750



EXCALIBUR KEEN CUT BOARD CUTTER



KAESSER SK19 ROTARY SCREW AIR COMPRESSOR

## WIRE-O EQUIPMENT

- GBC** Sickinger Punch Model USP-13 (Mid 2000 Vintage) w/Plastic Comb Die
- Sickinger** Punch Model HP-17, S/N 2933296, w/ 2:1 Wire-O Die, 3:1 Wire O-Die, 4:1 Oval Coil Die
- GBC** Comb Binding Punch Model 111-PM, S/N 1212281 (Mid 2000 Vintage), Plastic Comb Punch
- Marlon** Auto Crimper Model 300i, 350 Marlon Coil Inserter

## DIE CUTTERS

- Heidelberg** Cylinder Die Cutter Press Model S, Black, Converted
- Thompson** Die Cutter Model Value-Line, 28" x 40" w/Safety Guards

## BOOKLET MAKERS

- Heidelberg** Stitch Expert Booklet Maker w/Bourg 20 Pocket Collator, TD offset Stacker, BDF Booklet Maker, (2) Hohner Stitchers

## CNC CUTTING TABLE

- Colex** CNC Table Model FBC5X10, S/N 2013124 (New 2013), 1.5 HP Router, Score Tool, Tangial Knife Paper, Tangial Knife Styrene, Oscillating Knife, Kiss-Cut Tool

## BANDING MACHINES

- Felins** Ultra-Sonic 2000-A Paper Bander, S/N 992235

# COMPLETE LOT CATALOG, REGISTRATION & BIDDING AT [WWW.THOMASAUCTION.COM](http://WWW.THOMASAUCTION.COM)



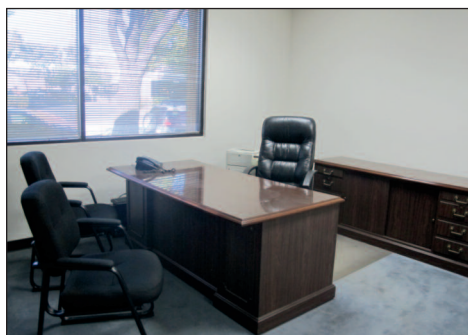
HYSTER 5000 LB. ELECTRIC FORKLIFT MODEL E50Z-27



MITSUBISHI BOX TRUCK



EXECUTIVE CONFERENCE ROOM



HIGH QUALITY OFFICE FURNITURE



THOMPSON DIE CUTTER MODEL VALUE-LINE



KIRK RUDY VARIABLE DATE TABBING LINE

## LAMINATORS

**Autofeeds** Laminator Model HTS30, S/N 1028 (Late 90's Vintage), 1 or 2-Sided Laminator, D&K Sheeter & Stacker

## MOUNTERS

**Tunkers** Semi-Auto Mounter Model UAM 1120

## PACKAGING MACHINES

**Shanklin** L-Seal Packaging Machine Model F-5A, S/N F9815 (New 2000) W/ T-5 Heat Tunnel 16 x 6 x 48" V7XL T07331

## SCOTT - TAB EQUIPMENT

**Scott** Plastic Index Tab Machine Model 1800, S/N 1003-7S-52374

**Scott** Heavy Duty Tabcutter 1/2" Tab Die

## TABBERS

**Pitney Bowes** Production Tabber Model W360 (New 2013) w/ Stacker and Feeder

## UV COATERS

**Dorn** 30" UV Coater S/N C707675 (Mid 2000 Vintage), Rossback 30" Feeder, American 40" Stacker

## PAPER COUNTER

**Spartanics** Paper Counter Model EZ-Kount 750, Paper Counter/Tabber

## PROOFERS

**Epson** Stylus Pro 9900 (New 2014)

**Epson** SureColor T7000 (New 2014)

## FORKLIFTS - MATERIAL HANDLING

**Hyster** 5000 lb. Electric Forklift Model E50Z-27, S/N G108N09341F, Side-Shift

## PLANT SUPPORT

**Plant Support:** Bindery Carts, Kleencut Board Cutting Systems, Bostitch Wire Stitchers, Uline H1254 Poly Bag Sealer, Digital Scales, Fans, Ladders, Pallet Jacks, Storage Cabinets, Hand Tools, Power Tools, Office Furniture & Equipment, etc.



**From 2015-2020, Printing Companies will Grow Primarily through Mergers & Acquisitions**

**Epicomm & Thomas Industries are partnering to provide printers a unique opportunity to explore strategic growth options.**

Our in-depth knowledge of the printing industry and longstanding relationships with printers nationwide mean we can combine invaluable data on industry trends with thousands of pre-qualified printers seeking to expand their businesses through mergers or acquisitions.



# MAJOR ONLINE PRINTING AUCTION

COMPLETE CLOSURE OF COMMERCIAL PACKAGING PRINTER

**KOMORI SHEET FED PRESSES – DIGITAL PRINTING EQUIPMENT  
CONVERTING & PACKAGING EQUIPMENT – COMPLETE BINDERY**

## Advanced Printing

1183 Quarry Ln  
Pleasanton, CA 94566

**SALE DATE: THURSDAY,  
MARCH 24, 1:00 PM (ET)**

**OPEN HOUSE INSPECTION:  
WEDNESDAY, MARCH 23,  
9 AM to 4 PM**

**Registration & Bidding:**  
[www.thomasauction.com](http://www.thomasauction.com)

**Buyer's Premium:** 15%

**Staggered Closing Times:** Lots Have 60-  
Second Staggered Closing Times.

**Auto Extend Bidding:** If a bid is submitted  
with less than 3-minutes remaining, the clos-  
ing time for that lot will be extended by 3-  
minutes.

**Payment Due In Full:** Friday, March 25, 2016

**Payment Types:** Certified Check or Wire  
Transfer

**As-Is Where-Is:** All Items Are Sold "As-Is  
Where-Is" With No Warranty or Guarantee of  
Operating Condition. Auctioneer Strongly  
Recommends That Buyers Inspect  
Equipment Prior to Bidding.

**Removal:** All items must be removed by  
Friday, April 8, 2016. NO EXCEPTIONS

**Removal Costs:** Buyers are fully responsible  
for all cost to remove their purchases.  
Please get removal quotes prior to bidding  
and bid accordingly.

### DISCLAIMER:

Auctioneer is not responsible for errors, omissions,  
additions or deletions. Items offered may not neces-  
sarily be sold as described and/or photographed.  
Buyers should verify all aspects of their potential pur-  
chases during inspection as all items offered will be  
sold "as is, where is" with all faults. Please check with  
the auctioneer's office for additions or deletions.

### TECHNICAL INFORMATION

Fred Moss (781) 844-1645

### PAYMENT INFORMATION

Irina Lekhmus (203) 458-0709 x108

### ONSITE INFORMATION

John Standish (203) 915-3430

### THOMAS INDUSTRIES APPRAISAL DIVISION

Accurate appraisals supported by over  
56 years of conducting worldwide  
auctions and liquidations.



Call (203) 458-0709 for a confidential  
appraisal of your assets. One piece  
of equipment or an entire plant.



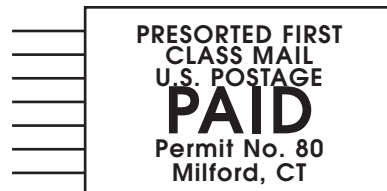
THOMAS INDUSTRIES, INC  
2414 BOSTON POST RD.  
GUILFORD, CT 06437  
203 458 0709

GAVEL@THOMASAUCTION.COM

Under Management of:



**THOMAS INDUSTRIES**  
2414 Boston Post Road  
Guilford, CT 06437-2310  
(203) 458-0709 • (203) 458-0727 Fax  
<http://www.thomasauction.com>



## MAJOR ONLINE PRINTING AUCTION

### COMPLETE CLOSURE OF COMMERCIAL PACKAGING PRINTER

FORWARDING SERVICE REQUESTED

### Advanced Printing

1183 Quarry Ln  
Pleasanton, CA 94566

#### SALE DATE:

Thursday, March 24,  
1:00 PM (ET)

#### OPEN HOUSE INSPECTION:

WEDNESDAY, MARCH 23,  
9 AM to 4 PM

**BUYER'S PREMIUM 15%**

**KOMORI SHEET FED PRESSES • DIGITAL PRINTING EQUIPMENT  
CONVERTING & PACKAGING EQUIPMENT • COMPLETE BINDERY**

### COMPLETE CLOSURE OF COMMERCIAL PACKAGING PRINTER

By Order of:

**Advanced Printing**  
1183 Quarry Lane, Pleasanton, CA 94566



THOMPSON DIE CUTTER MODEL VALUE-LINE



KIRK RUDY VARIABLE DATE TABBING LINE

**SALE DATE: THURSDAY, MARCH 24, 1:00 PM (ET)**

**OPEN HOUSE INSPECTION: WEDNESDAY, MARCH 23, 9 AM to 4 PM**

**AUCTION INFORMATION • [WWW.THOMASAUCTION.COM](http://WWW.THOMASAUCTION.COM) • 203-458-0709**