

Onsite & Webcast Public Auction

# HUGE OFFERING OF FOUR SLIDES & SPRING COILERS

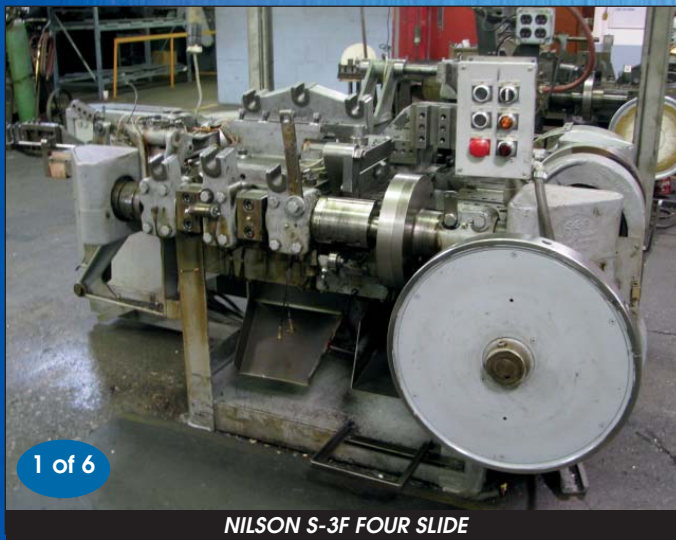
Equipment Surplus to Future Needs of:

## American Coil Spring Co.

1041 East Keating Ave • Muskegon, Michigan, USA

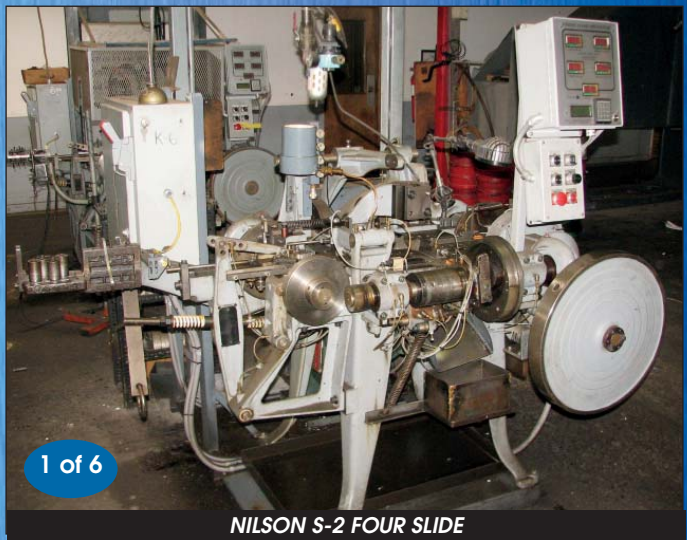
**SALE DATE:** February 19, 10:30 AM (CT)

**INSPECTION:** February 18, 9 AM to 4 PM (CT)



1 of 6

*NILSON S-3F FOUR SLIDE*



1 of 6

*NILSON S-2 FOUR SLIDE*



*TORRINGTON & SLEEPER HARTLEY TORSION MACHINES*



New  
1994

*FADAL 914-VMC15 MACHINING CENTER*



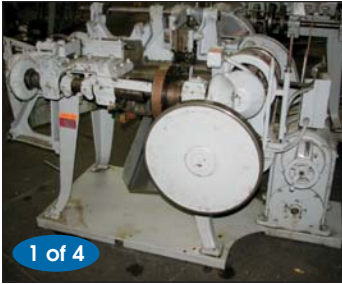
Sale under Management of:

**Thomas Industries, Inc.**  
2414 Boston Post Road,  
Guilford, CT 06437-2310





# SALE DATE: FEBRUARY 19, 10:30 AM (CT)

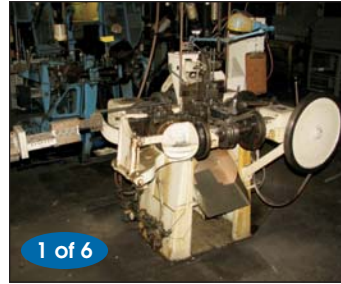


1 of 4

NILSON S-1F FOUR SLIDE



BAIRD #2 FOUR SLIDE



1 of 6

BAIRD #1 FOUR SLIDE



WAFIOS WSR1 RING ROLLER



1 of 4

TORRINGTON W115A SPRING COILER



(2) ITAYA D7E SPRING COILERS



TORRINGTON W125A SEGMENT COILER



BESLY 918 VERTICAL SPINDLE SPRING GRINDER



RAMCO PARTS WASHERS



LEBLOND 15" X 48" LATHE



KOMATSU 35 TON OBI PRESS



1 of 7

TORRINGTON W11A SPRING COILER



1 of 3

BESLY 905-18 VERTICAL SPINDLE GRINDER

## (30+) FOUR SLIDES

- Nilson Four Slide, Model S-4F, S/N 33075, 1/4" cap., Split & Solid Cams, 1 Plane Straightener
- (6) Nilson Four Slide, Model S-3F S/N 97390, 71190, 57030, 32197 & N/A, 3/16" cap.
- Nilson Four Slide, Model S-3 S/N 81680, 3/16" cap., Solid Cams, 1 Vertical
- (6) Nilson Four Slide, Model S-2, S/N 83130, 76721, 69510, 38210 & N/A, 1/8" cap.
- (4) Nilson Four Slide, Model S-1F, S/N 74415, 72650 & 63470, 3/32" cap.
- (2) Nilson Four Slide, Model S-1, S/N 66280 & 36411, 3/32" cap.
- Baird Four Slide, Model 2, S/N 1605-244, 1/8" cap.
- (6) Baird Four Slide, Model 1 S/N 1628-197, 11003-177, 11003-225, 11003-244, 8150-115, & 53-1628-134, 3/32" cap.
- Baird Four Slide, Model 00-RWI, S/N 5507-19, 1/32" cap.
- Torin Four Slide, Model T-3-S, S/N 154607, 3/16" cap., Shell Cams, 2 Verticals

## SPRING GRINDER

- Besly Vertical Spindle Spring Grinder Model 918, S/N 918-30-042, 10 HP, 30" Grinding Wheels, 50" Feed Wheel
- (3) Besly Vertical Spindle Grinder Model 905-18, S/N 905-18-199, 905-18-198 & 905-18-031, 18" Grinding Wheels
- Besly Vertical Spindle Tandem Disc Grinder, Model DV9, S/N DV24-B10T, 24" Grinding Wheels, 40" Feed Wheel

## (40+) SPRING COILERS

- Torrington Segment Coiler, Model W125A, S/N 93004, .207" cap.
- (4) Torrington Spring Coiler, Model W115A, S/N 102920, 119141, 178711, 178735, .112" cap.
- Torrington Spring Coiler, Model W100A, S/N 138515, .015" cap.
- Torrington Segment Coiler Model W12A, S/N 99480, .148" cap., Torsion, 1 Plane Straightener
- (7) Torrington Spring Coiler, Model W11A, S/N 73751, 127217, 178741, 67376, 104291, 113203 & N/A, .072" cap
- (5) Torrington Spring Coiler, Model W10A, S/N 117992, 123297, 126336, 138300 & 88105, .028" cap.
- (2) BHS-Torin Spring Coiler, Model W115A S/N 6537 & 7900, .112" cap., VF Drive & Elec Clutch
- (2) Itaya Model D7E, .028" cap.
- (3) Itaya Spring Coilers Model D7, S/N 3735, 4840 & 4398, .028" cap.
- (8) US Baird Spring Generators Model 1, .034" cap.
- Sleeper & Hartley Clutch Type Spring Coiler Model 318, 6 6" Feed Rolls
- (5) Sleeper & Hartley Cont. Spring Coiler Spring Maker Model 254, Torsion
- Sleeper & Hartley Optimum Feed Spring Coiler, Model 1/2 - 790 S/N 4812642, .042" cap.
- Sleeper & Hartley Optimum Feed Spring Coiler, Model 1-1/3-791, S/N 12744-15, .105" cap.
- Samuel Popcorn Coiler Model 1-1/4, S/N 4621762, .062" cap.
- (2) Samuel Model 0 Segment Spring Coiler S/N 25352778 & 25889779, .040" cap.
- Samuel Segment Spring Coiler Model 1, S/N 4806163, .072" cap.

## (45+) TORSION COILERS

- (9) Torrington Torsion Coiler, Model W3001, S/N 101607, 111010, 90089, 86183, 87821, 74549, 69540 & N/A, .080" cap.
- (5) Torrington Torsion Coiler, Model W3000, S/N 159951, 131413, 119095, 104468, 100286, .041" cap.
- (7) Sleeper & Hartley Torsion Coiler, Model 1-731SA, S/N 12554, 12938-392, 259-12355, 105-11871, 12455, 12629 & 12931, .072" cap., Electric Clutch
- (3) Sleeper & Hartley Torsion Coiler, Model 1-731A, S/N 111-11867, 110-11867 & N/A, .072" cap., Electric Clutch
- (4) Sleeper & Hartley Torsion Coiler, Model 1-731, S/N 189-12154, 73-11775 & N/A, .072" cap., Electric Clutch
- (7) Sleeper & Hartley Torsion Coiler, Model 1-614, S/N 614-345-11882, 614-246-100, 8131, 10010 & N/A, 4-Slide, .0625" cap.
- Sleeper & Hartley Torsion Coiler, Model 0-730, S/N 15-12199
- Sleeper & Hartley Torsion Coiler, Model 0-607, .0258" cap.
- (4) Sleeper & Hartley Torsion Coiler, Model 1-1/4-638, 2-Slide, .080" cap.

## RING ROLLER

- Wafios Ring Roller with Welder Model WSR1, S/N 225100L2,

## SPRING LOOPERS

- (2) Sleeper & Hartley Looper, Model 1-227, .0625" cap.
- (2) Sleeper & Hartley Looper, Model 2-285, .162" cap.

# WEBCAST BIDDING AVAILABLE



MINSTER #2 OBI PRESS



BLISS C-35 OBI PRESS



BRIDGEPORT 2 HP VERTICAL MILL



WHEELABRATOR FINISHING MACHINE



ARBOGA ER-830 RADIAL ARM DRILL

## CNC - MACHINING CENTER

Fadal Vertical Machining Center, Model 914-VMC15, S/N 9110274 (1994), w/4th Axis

## PRESSES - OBI

1986 Komatsu 35 Ton OBI Press, Model OBS35-3, S/N 12091, 3.15" Stroke, 60-120 SPM, 8.27 Die Ht, 2.17" Adjustment, 13.78" LR x 11.81 FB Bed Area, Triad Brake Monitor, Air Clutch

Bliss 35 Ton OBI Press Model C-35 S/N HF49604-H65715, 10 3/4" Shut Ht, 3" Stroke, 2 1/2" Adj.

Kenco 20 Ton OBI Press, Model A202-095-200, S/N 88-064 Back Geared, Air Clutch, Gordon Brake Monitor

Minster 16 Ton OBI Press Model 2, S/N 2-9449, 2" Stroke, 1 3/4" Adjustment, Air Clutch, Mechanical Press Feed

Press-Rite OBI Press

V & O OBI Press

## PRESSES - GAP FRAME

Precision "Flexopress" 15 Ton Gap Frame Press, Model HPC-15, S/N 562105, 300-900 SPM, Air Clutch, Dipro 1500

Wintriss Die Protection Control

## TOOLROOM - MILLING MACHINES

Bridgeport 4 HP Series II Vertical Milling Machine, S/N 5281

Bridgeport 2 HP Vertical Milling Machine, Model Series I, S/N 12BR-187580, 9' x 42" Table, Power Feed, DRO

(2) Bridgeport 1 1/2 HP Vertical Milling Machine S/N 112BR169682 & 12BR-154583, 9' x 42" Table, Power Feed, DRO

Van Norman Universal Mill Model IRO-3-22, DRO

## TOOLROOM - LATHES

LeBlond Engine Lathe, Model Regal, S/N N/A, 15" x 48" Center Distance, 3-Jaw Chuck, Micrometer Stop, 45-1800 RPM

(2) Reed Prentice Sliding Gear Head Engine Lathe, 14" x 36" Center Distance

## TOOLROOM - BAND SAWS

Grob 24" Vertical Band Saw

DoAll 16" Vertical Band Saw, Model ML, S/N 4610733, Blade Welder & Grinder

Wells 5 1/2" x 12" Horizontal Band Saw

## TOOLROOM - DRILLS

Delta Gang Drill 15", 2 Spindle Type Table, W/ Wisconsin Multi Spindle Drill Head, Pneumatic Feed

Arboga Radial Arm Drill Model ER-830, S/N 235035

## GRINDERS - SURFACE

1987 Kent 16" x 40" Hydraulic Surface Grinder, Model GS-410A11D, S/N 870457-1, Electro Magnetic Chuck

Okamoto 12" x 24" Hydraulic Surface Grinder S/N 7869, Neutrofer Magnetic Chuck Control

Covel 6 x 18 Surface Grinder, Model 15, S/N 15-1020, 4" x 8" Chuck, PMC

Harig 6" x 18" Surface Grinder S/N 9031-W, Model 618HF

Harig 6" x 12" Surface Grinder S/N 18020

## GRINDERS - O.D.

Brown & Sharpe 10" x 24" O.D. Grinder Model 1024U, S/N 521-1024-244, 2 HP Wheel head

## SHEARS

Pexto Shear

## SPRING TESTERS

Bud 5U Spring Cycle Tester, 5 Stations

Carlson Spring Tester Model CPT-200, S/N 94

Carlson Torsion Tester Model MIT-2, S/N 148, 20LB Cap

## OPTICAL COMPARATORS

Deltronics 14" Optical Comparator

Kodak 14" Optical Comparator

(3) Scherr Tunic 14" Optical Comparator

(2) Gage Master 12" Optical Comparators

J & L 5" Optical Comparator

Master View Comparator

## TOOLROOM - OTHER

1990 MSC 20" Floor Type Drill Press, Model 951245, S/N 190078C

Clausing 15" Floor Type Drill Press, Model 1671 S/N 519526

Electro Arc Disintegration Machine W/ Model LBH Head

Support Items: Drill Press, Arbor Presses, Vises, Chucks, Collets, Double End Grinders, etc

## AUCTION INFORMATION

Sale Site:

American Coil Spring Co.

1041 East Keating Ave, Muskegon, Michigan, USA

Sale Date: February 19, 10:30 AM (CT)

Inspection: February 18, 9 AM to 4 PM

Webcast Bidding Available:



Buyer's Premium: 12.5% Onsite or 15% Webcast

COMPLETE AUCTION INFO AT: [www.thomasauction.com](http://www.thomasauction.com)

Auction Conducted by

THOMAS INDUSTRIES INC



2414 Boston Post Rd.

Guilford, CT 06437

PH 203-458 0709

FX 203-458-0727

[gavel@thomasauction.com](mailto:gavel@thomasauction.com)

[www.thomasauction.com](http://www.thomasauction.com)

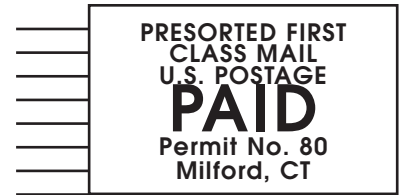
# BUYER'S PREMIUM 12.5% ONSITE AND 15% WEBCAST



Under Management of:



**THOMAS INDUSTRIES**  
2414 Boston Post Road  
Guilford, CT 06437-2310  
(203) 458-0709 • (203) 458-0727 Fax  
<http://www.thomasauction.com>



**Sale Date:**

February 19, 10:30 AM (CT)

**Inspection:**

February 18, 9 AM to 4 PM (CT)

**Sale Site:**

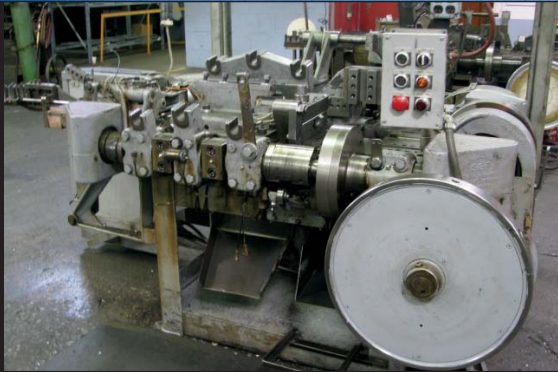
Equipment Surplus to Future Needs of:

**American Coil Spring Co.**  
1041 East Keating Ave  
Muskegon, Michigan, USA

FORWARDING SERVICE REQUESTED

# Onsite & Webcast Public Auction Huge Offering of Four Slides & Spring Coilers

*NILSON S-3F  
FOUR SLIDE*



1 of 6

*TORRINGTON  
& SLEEPER  
HARTLEY  
TORSION  
MACHINES*



*KENT 16" X  
40" HYDR  
SURF  
GRINDER*



*DELTRONICS  
14" OPTICAL  
COMPARATOR*

